

Joint Research Management Office

Research News Bulletin

Issue 129

19 September 2023

The Research News Bulletin is edited by Nick Good ~ nicholas.good@nhs.net

Ops Director appointed for new NIHR Barts CRF

Jo Morgan has been appointed as Operations Director for the new NIHR Barts Clinical Research Facility at the Royal London Hospital.

The new NIHR Barts CRF at Whitechapel is due to open in September 2024. It will provide world-class facilities and services for early-phase clinical trials in a welcoming, safe and compliant environment.

Barts Health has recently received a major National Institute for Health Research (NIHR) CRF infrastructure award and with the support of Barts Charity, it is building this new CRF which will be located on the 15th floor of the Royal London Hospital. The new CRF is a central element of the work of [Barts Life Sciences](#), which was established by Barts Health NHS Trust and Queen Mary, University of London to accelerate healthcare innovation from bench to bedside.

Jo brings a wealth of experience to the role, having worked at Barts Health, formerly



Whipps Cross Hospital NHS Trust, in most areas of research support, including research governance, audit, monitoring, assessing study feasibility and finance.

Under her leadership, the existing facilities have been expanded and both the research portfolio and income has been doubled, moving the existing CRFs from deficit into credit.

The new post will provide leadership and oversee the creation of the new state-of-the-art research facility at the Royal London Hospital, as well as lead the existing CRF at Whipps Cross Hospital. It will deliver an innovative strategy to ensure this CRF delivers to early-phase experimental research, supports our research community and will be responsible for the business, financial, operational, and regulatory aspects of the CRF; ensuring that it works as part of a wider team to enable the implementation of clinical studies.

Prof Rupert Pearse, Clinical Director of Research said, "I am delighted to announce Jo's appointment as Operations Director for our Clinical Research Facilities at Barts Health. Jo is a very experienced R&D leader and has played a key role in the success of our early-phase trial delivery for some time. She will join Dr Kieran McCafferty, CRF Clinical Director, as we work towards the opening of our new CRF at the Royal London which is on target to open in the summer of 2024."

Jo said, "I am excited by the challenges of my new position. My vision is to deliver evidence-based research and related opportunities through our CRFs. This must be in a way that addresses the needs of our local users, both researchers and the public, and which empowers and supports them through an inclusive and responsive service delivery structure."

Bulletin contents

<u>News</u>	1
Ops Director appointed for new NIHR Barts CRF	3
New CRN funding allocation mechanism	3
Research design support changing	3
Promoting vaccination: the right approach for the right group	3
HRA-led survey: involving patients and the public in the design and delivery of clinical trials	4
New digital archive for research records	4
Reimbursing patient and public expenses	5
New NIHR Principal Investigator Pipeline Programme	6
Hike for Health with Barts Charity	6
UKRI: 101 Jobs that change the world	6
Making it easier to set up research involving health and social care staff	6
New FMD-Barts Charity application process announced	6
QMEthics system: launched and live	7
Centre for Public Engagement increases PPI funding	7
New JRMO SOPs issued	7
<u>Our research</u>	8
Collaboration set to improve the diversity of patients in clinical trials	8
E-cigarettes may be better at helping pregnant women stop smoking	8
Researchers secure £3m NIHR funding for new blood clot prevention trial	9
New study shows effectiveness of mpox vaccine	10
Experimental Medicine and Rheumatology awarded Centre of Excellence status	10
New Centre for Preventive Neurology	11
AssistMS launched	11
Volunteers needed for inflammation research	12
<u>Events</u>	12
ICS Research Engagement Network (REN) development programme launches	12
<u>Training</u>	13
JRMO GCP Training	13
Narrative CV training	13
NIHR Learning for Involvement	13
UCL BRC PPIE Training	13
<u>Research funding</u>	14
NIHR grant calls	14
UKRI grant calls	15
JRMO International Team funding bulletin	17
Barts Charity grants	17
<u>Fellowships and related opportunities</u>	18
<u>Research Professional</u>	20

~ Please remember to upload your recruitment data regularly ~

It is the responsibility of the research team to ensure the EDGE record is accurate and that all research activity (recruitment) is recorded.

If you need any EDGE training or require further EDGE accounts, please contact zabed.ahmed@gmul.ac.uk in the JRMO

New CRN funding allocation mechanism

Barts Health is changing the way research teams and investigators request approval to fill vacant research delivery posts funded through NIHR CRN and how we make decisions to submit business cases for new posts to the CRN.

Until 2021 CRN NT determined where this resource was placed within the Trust and whether research recruitment activity was sufficient to warrant the support provided. Since then, the operational management of CRN funding devolved to the Trust, with a requirement to have a documented, transparent process for decision-making in this regard.

From August 2023 a new process is being piloted, in which decisions on replacing vacant posts and the consideration of new business cases will be made by a newly formed CRN Funding Oversight Committee.

Requests for new funding or renewal of vacant posts must be received a minimum of one week before a committee meeting. They should be sent to BartsHealth.CRNsupport@nhs.net on the [Barts Health CRN Funding Application form](#).

More information can be found [on the JRMO website](#). If you have any comments on this please contact BartsHealth.CRNsupport@nhs.net

Research design support changing

The NIHR has announced that a new Research Support Service (RSS) will come into operation on 1 October 2023. The new service replaces the NIHR Research Design Service (RDS) – including [RDS London](#) - and NIHR Clinical Trial Units (CTU) support funding, which both end on 30 September 2023.

The NIHR RSS will provide researchers, particularly those applying for or in receipt of NIHR funding, with free access to support, advice and expertise, and will help develop and deliver your clinical and applied health and care research.



The new service has been established following an open and competitive process assessed by research experts and public contributors.

The NIHR RSS will operate nationally and will allow researchers to access the most appropriate support independent of their location. It will provide seamless support for all researchers in England working across the remit of the NIHR, from pre-application through to post-application phases. It will connect with the NIHR Clinical Research Network to support the development of studies designed to ensure they are optimised for delivery at study sites.

Locally the new RSS will be managed by partners Imperial College London and King's College London. More information can be found on [the NIHR website](#).

Promoting vaccination: the right approach for the right group

Vaccines protect individuals and society from infectious diseases. However, people vary in their acceptance; age, ethnicity, household income and other factors influence their willingness to be vaccinated. Research can identify ways to improve vaccine uptake in certain groups and reduce inequalities.

Information [on the NIHR website](#) brings together examples of research on how to increase vaccine uptake and explores how best to engage and communicate effectively with different communities. This is useful information for those commissioning and delivering vaccination services.

Diseases like smallpox, polio and tetanus used to kill or disable millions of people. Since vaccines were introduced, [these diseases](#)

[have either been eradicated or become very rare in the UK](#). Other diseases, such as measles and diphtheria, have been reduced by 99.9% since their vaccines were introduced. However, to be most effective, vaccination programmes depend on a large enough proportion of the public accepting the vaccine. When this happens, so-called [herd immunity reduces the spread of a disease](#), meaning that both vaccinated and unvaccinated people are protected.

However, the uptake of vaccines is lower in certain communities and populations. This can put people at risk of ill health and widen health inequalities. One of the aims of the [NHS long-term Plan](#) is to increase vaccine coverage in groups and areas with low uptake.

The NIHR collection of online information aims to address that by focussing on:

- How to engage communities
- Understand that community's needs
- Deliver vaccines and information in community settings
- Seize every opportunity to vaccinate
- Drive better practice
- Establishing effective communication



HRA-led survey: guidance on how to involve patients and the public in the design and delivery of clinical trials

Are you involved in the design and delivery of clinical trials in the UK?

The Health Research Authority (HRA) has in hand a survey to find examples of guidance and other resources currently being used to help involve patients and the public in the design and delivery of clinical trials.

This survey is part of ongoing work with the Medicines and Healthcare Products Regulatory Agency (MHRA) to develop guidance to support the new UK clinical trials regulations. More information about [the GRA and its work in this area can be found on its website](#).

Completing this survey will help the HRA understand what is most useful and effective as well as identify areas where guidance on patient and public involvement may need to be further developed.

[The survey](#) closes on 29 September 2023 and should take about 15 minutes to complete.

New digital archive for research records

The Corporate Records service at Barts recently procured a digital archive system which is suitable for the long-term storage of research records.

Arkivum provides a fully managed archiving and preservation solution compliant with:

- ISPE GAMP® 5: Compliant GxP Computerized Systems
- FDA 21 CFR Part 11, 210, 211, 820
- EU Commission: EudraLex Volume 4 GMP Annex 11
- ICH (International Council for Harmonisation) E6, E9, Q7A, Q9, Q10
- MHRA GxP Data – Guidance for Industry
- ISO 9001:2015 – international standard for a [quality management system \(QMS\)](#)

- ISO 27001:2017 – information security management



Records from all clinical research studies sponsored by and/or hosted within Barts Health and QMUL can be stored. Almost all file formats can be ingested, archived, and safeguarded. There is no size limit, and it is designed to hold patient-identifiable data.

There will be a cost associated with this service for new studies and the fees will be available as soon as they have been confirmed.

Please see the [JRMO website](#) for more information, including an FAQ.

If you have records for closed studies you'd like to transfer, or if you have any questions, please contact records.management@nhs.net

Reimbursing patient and public expenses

The JRMO website has [information online](#) covering all aspects of reimbursing expenses and payments for involvement and participation in research.

The webpage provides guidance on making payments to public contributors who are actively involved in health and social care research, as well as reimbursing the expenses of people who take part in research as participants. This applies when people are partners in the various stages of research, from identifying and prioritising topics and commissioning to evaluation and dissemination.

The page covers both public involvement payments at Barts Health and reimbursing expenses and paying public contributors at Queen Mary. It provides full details of the

process at both organisations along with forms, external links and relevant points of contact.

This includes NIHR guidance on paying for involvement in the form of Guidance for Researchers and Professionals, Guidance for members of the public considering involvement in research, and Guidance for public contributors who receive welfare benefits.

Making it easier to set up research involving health and social care staff

The Health Research Authority (HRA), in collaboration with the Devolved Administrations of Wales, Scotland and Northern Ireland, has launched a new pilot to improve the process for setting up research involving health and social care staff as participants.

This UK-wide pilot will reduce the number of questions that researchers need to respond to in their applications for regulatory approval for these types of studies, where NHS staff and Health and Social Care (HSC) staff in Northern Ireland are participants. As part of the pilot, the HRA will also test a more streamlined process for assessing whether the site where the research is taking place can deliver the study.

The aim is to provide a more proportionate process for research that doesn't involve NHS and HSC patients or their carers and family members as participants, and this should save researchers time and means they can start their studies quicker.

The pilot is open to researchers conducting research limited to the involvement of NHS staff and HSC staff as participants. This includes research studies involving interviews, questionnaires and observations of NHS and HSC staff, not involving patients, their tissue or identifiable data.

Researchers who join the pilot will be asked to complete a smaller set of questions when submitting their form on the Integrated Research Application System (IRAS), which is the online platform used for processing applications.

For further information, please [see the IRAS website](#).

New NIHR Principal Investigator Pipeline Programme

If you are a research nurse or midwife looking to advance their career the new NIHR Principal Investigator Pipeline Programme (PIPP) aims to equip research nurses and midwives with the necessary theoretical knowledge, leadership skills and practical experience to become a principal investigator, responsible for conducting research at site.

The Programme is designed to help develop the skills, knowledge and experience required by research nurses and midwives to undertake a Principal Investigator (PI) role.

There are four core elements to the PIPP which are undertaken in sequential order:

- Element 1 covers the role and the responsibilities of the PI on an NIHR portfolio study and why the role is important in the delivery of high-quality research;
- Element 2 provides supervised experience in the PI role, enabling the development of practical knowledge and skills in a safe environment;
- Element 3 continues to build on the practical experience gained in Element 2 by undertaking the PI role on an NIHR portfolio study; and
- Element 4 consolidates all of the programme learning by asking participants to mentor other learners in Element 3 of the programme. It is anticipated that the programme will take between 12-18 months to complete.

More information about each element can be found on [the NIHR website](#).

The Programme is free of charge for eligible participants and is delivered through a variety of live virtual and online classroom environments, combined with hands-on experience.

Applications for the first cohort close on 30 September 2023.

Full information about the scheme, including how to apply, key dates and the online application process, can be found on [the NIHR website](#).

Hike for Health with Barts Charity

This year Barts Charity has launched an exciting new urban walking event, [Hike for Health](#).

The charity fundraiser, to help raise funds to help bring ground-breaking research and transformational healthcare to life in East London, takes place on 1 October, starting and finishing in St. Bartholomew's Square.

The 5k route explores some of the City of London's iconic buildings, including the Bank of England and Leadenhall Market, before looping back past the Tower of London and finally St Paul's, before returning to the square.

There are two other distances available so there is a walk for all abilities. A 10k route goes out to Limehouse before heading back along the river and a 15k includes a turnaround point in Canary Wharf.

NHS staff, along with their family and friends, can get a 50% discount when registering by using the code **'NHS50'**.

If you have any questions before signing up, please [visit the Barts Charity website](#) or contact Kevin Machin: kevin.machin@bartscharity.org.uk

UKRI: 101 jobs that change the world



During her postgraduate research programme, [Zi Parker](#) struggled with loneliness and decided that this was not a life for her. Now, as the Head of Doctoral College at Queen Mary, she helps postgraduate researchers get the support that she needed when she was doing her Ph.D.

Find out how Zi works hard with her team to make sure that postgraduate researchers

know they're not alone and that they feel part of a community.

[The video on YouTube](#) is part of our [101 Jobs series](#) that aims to highlight some of the many roles that contribute to the success of the research and innovation system

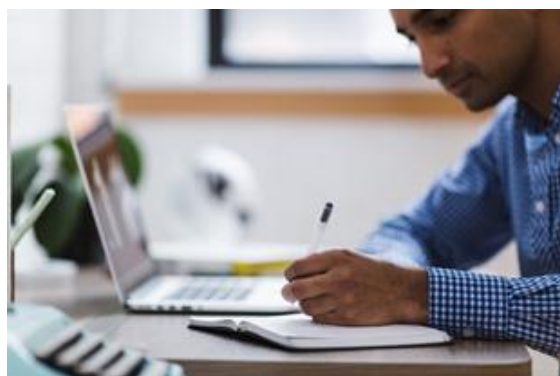
QMEthics system: launched and live

The new "QMEthics" online application form was successfully launched in July. There are now several live applications in the system and some that have already completed the process and received their ethics approval.

The team would like to remind all **Heads of Department and student supervisors** to [log in](#) and [activate your account](#).

After logging in the first time and updating your contact details, you will be searchable within the system by collaborators and your students.

For more information, please visit the [QMERC research ethics webpages](#), log into the [QMEthics site](#) to start your application or contact the team directly at research-ethics@qmul.ac.uk

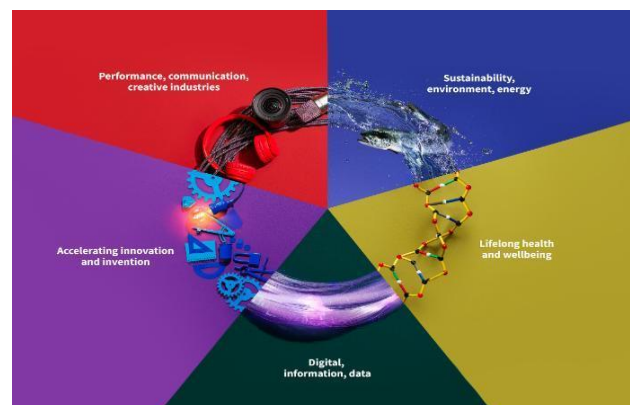


Centre for Public Engagement increases PPI funding

The CPE Patient and Public Involvement Small Grant is a monthly opportunity for students and staff to apply for up to £1,000 to support PPI.

The deadline for the first round is 15th October 2023 and the scheme runs until May 2024.

Find out [more on the Queen Mary Public Engagement website](#).



New FMD-Barts Charity application process announced

Queen Mary's Faculty of Medicine and Dentistry (FMD) has been considering establishing guidelines regarding our application processes to Barts Charity. Following extensive discussions, it has now approved guidelines setting out internal processes where relevant at FMD.

These guidelines aim to streamline our processes and to ensure an open and transparent process that delivers on the FMD Research Strategy.

The guidance can be found, along with other information relating to applying to Barts Charity, [on the JRMO website](#), submitting their form on the Integrated Research Application System (IRAS), which is the online platform used for processing applications.

For further information, please [see the full guidance on the IRAS website](#).

Standard Operating Procedure changes

Since the last R&D News Bulletin was published, the following SOPs and associated documents have been updated and released:

- SOP 16b External Access to Patient Electronic Health Records v2.0
 - AD1 TAC Guardian Authorisation Form v2.0
 - AD2 TAC Audit Log Form v2.0
 - AD3 TAC Usage Log Form v2.0
- SOP 38b Electronic data management systems for MHRA-regulated studies v6.0
 - AD 1 Requirements and specifications v4.0
 - AD 2 CRF design guidance v6.0
 - AD 3 Template Test Plan v2.0
 - AD 4 Test Script Template v2.0
- AD 5 Database Change Control Log v3.0
- AD 6 Test Report Template v2.0
- AD 7 End of study data activities v2.0
- AD 8 Data Management Systems Approval Form v2.0
- SOP 40 Vendor Assessment v5.0
 - AD 1 Vendor GCP and Governance Compliance Sample Questions v4.0
 - AD 2 Email template for summary and result of assessment v1.0

These and all JRMO SOPs can be found [on the JRMO website](#).

Our research

Collaboration set to improve the diversity of patients in clinical trials

A new pilot project aimed at increasing the number of ethnic minority women taking part in pioneering breast cancer clinical trials has been announced.

A collaboration between Barts Health NHS Trust, [The Christie NHS Foundation Trust](#), [Roche Products Ltd](#) and [Macmillan Cancer Support](#), the project aims to improve health equity by raising awareness, improving communication and providing more support to ethnic minority communities by increasing their representation in clinical trials for the disease. The project is supported by [the NHS Race and Health Observatory](#).

The pilot project will design new and better ways to access clinical trials and share information in a meaningful way. It will also involve the recruitment of two specialist nurses – one at Barts Health, the other at The Christie – who will work closely with patients, providing them with one-on-one support throughout their clinical trial experience – from discussions around joining, to follow-up appointments.

Research from the [UK Health Security Agency](#) and [Breast Cancer. Org](#) shows that when it comes to breast cancer, young black women in particular have more aggressive tumour profiles, present with later stages of disease, have higher mortality rates, and experience poorer cancer care. In addition, it is known that trials must include participants from all communities if there is to be confidence that new treatments are to benefit everyone.

Dr Peter Hall, a medical oncology consultant at Barts Health, involved in the project said: "It's well known that we need to do more to improve the diversity of participants taking part in the clinical trials we run at Barts Health and indeed, across the NHS. That's why I'm so excited about this project. By taking a targeted approach to driving diversity in clinical trials for a specific disease, we can not only improve representation for this condition but learn how we can do this for trials into other conditions too. Ultimately it will help us be more confident that the treatments we're providing really do work for everyone. It's also great to see this project being run as a collaboration between the NHS, charity and the commercial sector."

More information can be found on the [Barts Health website](#).

E-cigarettes may be better than nicotine patches in helping pregnant women stop smoking

E-cigarettes (vapes) may be better than nicotine patches for pregnant women quitting smoking. That's according to research funded by NIHR and led by Queen Mary University of London.

Smoking during pregnancy can harm a baby's development, especially its growth. Current guidelines recommend pregnant smokers who find quitting difficult receive nicotine replacement products. Stop-smoking services usually recommend nicotine patches. This research, published in [the NIHR Journals Library](#), says pregnant women should also consider e-cigarettes.



The study included 1,140 pregnant women who were trying to stop smoking. They were split into two groups. Half received e-cigarettes and half received nicotine patches. Both approaches were equally safe. Fewer women in the e-cigarette group had children with low birthweight (under 2,500 grams).

Researchers suggest this could mean e-cigarettes are better for cutting conventional cigarette use. Low birth weight has been linked with poor health later in life.

At the end of their pregnancy, women reported whether they had quit. Some women successfully quit smoking using a product they were not assigned. This was mainly women given patches stopping with the help of their own e-cigarettes.

Researchers also looked at successful quitters using only the treatment they were allocated. Nearly twice as many women quit with e-cigarettes than with nicotine patches. The researchers also looked at safety outcomes

It is unclear whether nicotine is harmful to developing babies. The National Institute for Health and Care Excellence guidance states toxins other than nicotine in cigarettes cause most health problems. It recommends nicotine replacement therapy alongside behavioural support. However, most pregnant women still struggle to quit.

E-cigarettes can be seen as a form of nicotine replacement therapy. They have an advantage over nicotine gum and patches. Smokers can select the strength and flavours they like, helping make quitting easier. This may be why e-cigarettes have proved more effective than traditional nicotine replacement therapy in smokers who aren't pregnant.

Peter Hajek, Director of the Health and Lifestyle Research Unit, Wolfson Institute of Population Health, Queen Mary University of London, said: "E-cigarettes seem more

effective than nicotine patches in helping pregnant women to quit smoking and because of this, they seem to also lead to better pregnancy outcomes. The evidence-based advice to smokers already includes, among other options, a recommendation to switch from smoking to e-cigarettes. Such a recommendation can now be extended to smokers who are pregnant as well."

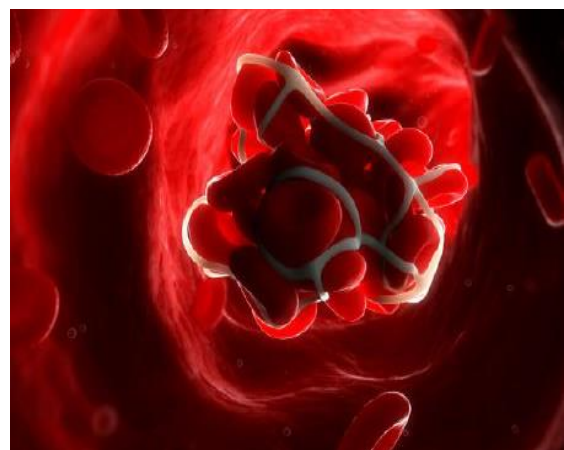
This research was funded by NIHR's [HTA Programme](#).

Researchers secure £3m NIHR funding for new blood clot prevention trial

The research group [Barts Bone & Joint Health](#), made up of researchers and clinicians from Barts Health NHS Trust and Queen Mary University of London, along with other partners has secured £3 million in funding from NIHR to deliver the UK's largest trial in thromboprophylaxis.

The trial named Thromboprophylaxis in Lower Limb Immobilisation (TiLLI) aims to compare different methods of pharmacological thromboprophylaxis – medications used to prevent blood clots – for patients with temporary lower limb immobilisation after injury to determine their clinical and cost-effectiveness.

The bid is being led by Professor Xavier Griffin, Clinical Professor in Orthopaedics at Queen Mary University of London, Honorary Consultant Orthopaedic Surgeon at Barts Health NHS Trust and Dr Daniel Horner, Consultant in Emergency and Critical Care Medicine at Salford Royal NHS Foundation Trust, in the UK.



Approximately 70,000 people are immobilised after injury every year in the UK. This can lead to venous thromboembolism (VTE), a condition where blood clots form in the veins, and may develop into serious conditions such as deep vein thrombosis (DVT) or pulmonary embolism. Temporary lower limb immobilisation (plaster cast, walking boot or rigid splint) and injury are combined risk factors for someone developing VTE. Many people who survive VTE suffer from longer-term physical or psychological complications. Luckily, VTE in lower limb immobilisation is potentially preventable through early prophylaxis with anticoagulant medication, which helps keep blood flowing smoothly and prevent clot formation. However, the risk of VTE varies widely from person to person, and there are multiple drugs available.

Currently, there is no high-quality evidence comparing different methods of pharmacological thromboprophylaxis for patients at high risk of VTE and limited evidence of the benefits and risks of any prophylaxis for patients at low risk of VTE. This trial will address this evidence gap by comparing the clinical and cost-effectiveness of various anticoagulant drugs and therapies. Chair of Bone and Joint Health Professor Xavier Griffin, Clinical Professor in Orthopaedics at Queen Mary University of London, and Honorary Consultant Orthopaedic Surgeon at Barts Health NHS Trust, said: "We are thrilled to have been awarded this grant to answer this question. It will have a huge impact on clinical care, improving care for patients not just in the UK but worldwide."

New study shows effectiveness of mpox vaccine

A new international study led by Queen Mary University of London has shown mpox (also known as monkeypox) infections to be less severe among those who are vaccinated or had a previous infection in 2022, underlining the importance and effectiveness of vaccination.

The research, published in [The Lancet Infectious Diseases](#), was delivered by the [SHARE](#)-net collaborative and looked at 38 mpox infections in 37 gay and bisexual men. Eight of the 38 were reinfections, and 30 infections occurred after a complete vaccination course. In the people who had been vaccinated, the results showed that the patients had fewer lesions (abnormal tissue

such as a wound or rash), less mucosal disease (diseases of the mucous membranes of the mouth and genitals), and a minimal need for pain medication or hospitalisation. Prof Chloe Orkin, Lead author, Professor of HIV Medicine at Queen Mary and Director of SHARE said: "We have to ensure global access to vaccinations and treatments if we want to curb this global outbreak, especially in the African regions that have been historically worst affected and are still without access to vaccines or treatment for mpox".

More information about this can be found on the [Queen Mary website](#).



Experimental Medicine and Rheumatology awarded European Centre of Excellence status

The Centre for Experimental Medicine and Rheumatology (EMR) at Queen Mary University of London has been honoured with the highly prestigious EULAR Centre of Excellence award in recognition of its outstanding contributions to the field of rheumatology and dedication to improving patient care.

The five-year status (2023-2028) recognises EMR as one of the top research centres for rheumatology in Europe and was awarded based on the centre's integrated, multidisciplinary research team of Clinicians, Scientists, Biostatisticians, Bioinformaticians, Clinical Trial Managers and administrative support staff who strive to deliver the best care to patients with Rheumatic Diseases.

The [European Alliance of Associations for Rheumatology \(EULAR\)](#) represents and collaborates with national rheumatology associations throughout Europe. This network plays a pivotal role in advancing rheumatology knowledge and enhancing the well-being of patients across the continent.

Thanks to invaluable resources provided by the [National Institute for Health and Care Research \(NIHR\) Barts Biomedical Research Centre \(BRC\)](#), EMR has been empowered to create a truly exceptional centre of excellence and establish itself as an internationally recognised leader in rheumatology research.



Professor Costantino Pitzalis, Head of EMR, said: "We are deeply honoured to receive this award. This recognition highlights the collaborative efforts of dedicated researchers, clinicians, and patients within our centre who are united in advancing our understanding of rheumatic diseases and transforming current practice through a precision medicine approach."

More information can be found on the [EMR website](#)

New Centre for Preventive Neurology

A Centre for Preventive Neurology has been established within the Wolfson Institute of Preventative Medicine at Queen Mary.

The new Centre established builds on the success of the Preventive Neurology Unit (PNU) and will continue to produce revolutionary research into dementia, multiple sclerosis and Parkinson's Disease, with the ultimate aim of improving patient outcomes and informing policy around neurological conditions.

The PNU, founded in 2017 with strategic investment by Barts Charity, has expanded significantly. The progress of the Unit to achieve Centre status reflects its rapidly growing reputation and unique research portfolio. Its work across multiple neurological conditions, to develop interventions underpinned by high-quality evidence from diverse populations, is internationally unique.

The CPN will be led by Professor Ruth Dobson, with Deputy Lead Professor Alastair Noyce. For more information please see the [Queen Mary website](#).



An exciting new study entitled AssistMS has begun: AssistMS is short for Artificial intelligence-assisted magnetic resonance imaging for quality, efficiency and equity in the NHS care of Multiple Sclerosis

The kick-off meeting will occur on Monday 25 Sep 2023 in Department W and online! AssistMS is a jointly led study between Queen Mary and [icomatrix](#).

The study is made up of six work packages including an audit of current practice around MRI and multi-disciplinary team (MDT) decision review, downloading [icomatrix](#) software to PACS that will allow for independent pseudonymised analysis of MRIs, the clinical trial and a health economic assessment. It will investigate the assessment of brain MRI, obtained in people with MS, by neuroradiologists with (study arm 1) and without (study arm 2) assistance of [the icobrain MS software](#). The high-level aims are to test *icobrain ms* for superiority in detecting disease activity in a real-world NHS setting and undertake a health-economic analysis of the impact of *icobrain ms* on the disease course and NHS resources

The team's primary objective is to establish whether there is an advantage to using the software, over visual detection only, of MRI disease activity in people with MS on disease-modifying treatment.

The trial aims to start recruitment in the first quarter of 2024 across three sites: Barts Health NHS Trust, Nottingham University Hospitals NHS Trust and University Hospitals Birmingham NHS Foundation Trust. The academic lead and CI is Prof. Klaus Schmierer, Health Economics lead is Prof. Borislava (Boby) Mihaylova. If you have any queries, please contact Prof Schmierer (k.schmierer@qmul.ac.uk) or David Lieberman (d.lieberman@qmul.ac.uk) the AssistMS Project and Trial Manager.

Volunteers needed for inflammation research

Healthy male and female volunteers aged 18-45 are needed for a study exploring differences in how men and women resolve inflammation. Full details on what's involved can be found [on the trial website](#).

All volunteers will be compensated up to £130 + travel expenses. For further info please contact [Krishnaraj Rathod](#) or [Andrew Sullivan](#).



Events

ICS Research Engagement Network (REN) development programme – up to £100,000 to target specific, systemically embedded barriers to people's inclusion in research.

Research can be transformative for the health sector. Research can help Integrated Care Systems (ICSs) to address community-driven health priorities and to plan for healthier futures. NHS England's Innovation, Research, Life Sciences and Strategy team are launching the next stage of the REN programme, co-funded by DHSC, to support increased diversity in research participation. Register to join one of three upcoming webinars to find out more about the new competitive funding call to support clinical or academic partners to work collaboratively with Integrated Care Boards (ICBs) and patient advocacy groups locally and nationally to remove or mitigate specific, systemically embedded barriers to inclusion.

Examples of systemic barriers can include:

- Exclusion of older or younger people from research based on age.
- Exclusion of people living with multimorbidities or rare diseases from research where there is no contraindication in treatment.
- Exclusion of people from research based on language.
- Exclusion of people based on digital literacy levels.

- Exclusion of people who cannot give informed consent for research including those with learning disabilities, autism, or neurological conditions.

To register for one of the launch webinars by following the link:

[Tuesday 19 September, 11.00 am - 12 noon](#)

[Wednesday 20 September, 10.30 - 11.30 am](#)

Teams are invited to deliver approaches that:

- develop nationally transferrable recommendations to address specific inclusion barriers to taking part in research
- work with patient organisations and local communities (with lived experience of the specific barrier) to demonstrate an understanding of how recommendations can be applied locally.

The call formally opens on 18 September 2023, with a deadline of 9 am on 16 October, and activity expected to be delivered between 6 November 2023 and 31 March 2024. The application pack will be available through the [FutureNHS Collaboration Platform](#) (platform registration required).

Please contact england.research@nhs.net if you have any queries or would like to be directed to potential local partners.

Training

JRMO GCP Training

Both Queen Mary and Barts Health require all those undertaking clinical research at our sites to attend appropriate training. It is mandated that all researchers conducting MHRA-regulated trials must complete a GCP course and refresh it every two years. The same is advised as the best practice for all other researchers.

More details regarding research-specific training can be found in [JRMO SOP 34a Researcher Training](#) and [SOP 12b Associated Document 2: JRMO Sponsorship review proportionality document](#)

Dates for the forthcoming term can be [viewed on the JRMO website](#). Most courses are delivered by Zoom.

To book a course please email research.governance@qmul.ac.uk with the subject title 'GCP COURSE BOOKING', including in the body of the email the name of the JRMO course you wish to attend (see below). Your place will be confirmed by email.

Narrative CV training

The Narrative CV format (known as the "Résumé for Researchers" by the Royal Society and "Resume for Research and Innovation" - R4RI by UKRI) is increasing in its use in the sector, both for funding proposals and for joining peer review colleges.

The Queen Mary Academy has created an online resource on Narrative CVs, which is now live as part of our QM Plus Research Funding Module. It comprises a summary of written guidance along with a short 10-minute video.

Any researcher can self-enrol on this module and access it when they're ready. To access it for the first time, log into [QM Plus](#) using your (SSO) Queen Mary username and password. Once you have logged in, open the following link in a new browser tab and follow the prompts to enrol yourself on the module. "CVs (includes Writing Narrative CVs / Résumé for Researchers / R4RI)" is section 8 in the module.

The rest of the module will be updated in the coming weeks and contains videos and information that will help colleagues find funding opportunities and write competitive proposals, with videos and guidance from the Queen Mary research community on how they were able to get funding.



NIHR Learning for Involvement

Centre for BME Health BAME Toolkit: The Centre for BME Health has produced a checklist to help researchers when designing and recruiting for studies, as well as when conducting PPIE activities. The toolkit aims to capture best practices and provide researchers with a framework on how to improve the participation of people from ethnic minorities in research. Available on their [website](#).

Improving Inclusivity within Research: BAME groups are more likely to suffer from poorer health outcomes and health and social care inequalities and are less likely to be represented in health and social care research studies. This [training module and toolkit](#) from CRN East Midlands and the Centre for BME Health will help your research become more inclusive of ethnic minority groups.

Patient and Public Involvement Toolkit: Involving People's Public and Patient Involvement [Toolkit](#) is a very useful resource which will take you through each stage of the engagement process. This will help you understand what you are trying to achieve, plan how you will achieve it, produce a report based on your findings, and inform how your services can meet the needs of local people better.



The Centre for Ethnic Health Research
national centre for tackling health inequalities

UCL BRC PPIE Training

University College London's BRC provides regular PPIE training sessions for researchers.

The award-winning sessions build up researchers' skills and confidence in involving laypeople in activities, including setting research priorities and designing protocols. Evaluation in BMJOpen (Yu et al. 2021) showed marked increases in researchers' PPIE confidence after our training.

There are five modules available, including an introduction to PPIE and sessions on running

focus groups, finding people and filling in grant applications. You can attend all 5 modules to build up knowledge progressively or you can pick the one that best suits you.

The training is available to all researchers, although non-UCL/ UCLH/UCLP-related staff do have to pay a small fee for each workshop attended.

For more information, please visit [the UCLH BRC website](#).

Research funding

NIHR grant calls

NIHR | National Institute
for Health Research

[Programme Development Grants - Competition 37](#)

Applications are invited for Programme Development Grant funding. Programme Development Grants are designed to increase the rate and number of successful applications for a full Programme Grant by supporting the completion of the necessary preparatory work to suitably position the research team to submit a competitive Programme Grant application.

Closes: 20 September 2023

[23/92 EME Application Development Award – Industry engagement for a Phase 2 pre-licence platform to evaluate pharmaceutical and digital interventions for obesity](#)

The Efficacy and Mechanism Evaluation (EME) Programme is accepting straight-to-Stage 2 applications to their commissioned workstream.

Closes: 13:00 on 20 September 2023

[23/89 Series 1: Overcoming ethnicity-based inequities in access and experience of health and care services](#)

Series 1: Overcoming ethnicity-based inequities in access and experience of health and care services

Closes: 13:00 on 20 September 2023

Closes: 13:00 on 20 September 2023

[23/77 National Learning Disability and Autism Programme Demand Signalling](#)

The Health and Social Care Delivery Research (HSDR) Programme is accepting stage one applications for this funding opportunity.

Closes: 13:00 on 20 September 2023

[23/43 Management of severe acute asthma in children](#)

The Health Technology Assessment Programme is accepting Stage 1 applications to their commissioned workstream for this primary research topic

Closes: 13:00 on 20 September 2023

[23/10 Health and Social Care Delivery Research Programme researcher-led](#)

The Health and Social Care Delivery Research (HSDR) Programme is accepting Stage 1 applications for this funding opportunity.

Closes: 13:00 on 20 September 2023

[23/67 Palliative and End of Life Care \(HSDR Programme\)](#)

The Health and Social Care Delivery Research (HSDR) Programme invites applications for Palliative and end-of-life care research which supports health and care services to help people at the end of their lives to live as well as possible and to die with dignity, compassion and comfort.

Closes: 13:00 on 20 September 2023

[23/61 PHIRST Local Authority Evaluation of Interventions EoI](#)

The Public Health Research (PHR) Programme is accepting Expressions of Interest from local government for evaluations of interventions by the NIHR's Public Health Intervention Responsive Studies Teams (PHIRST)

Closes: 13:00 on 26 September 2023

[23/60 The use of artificial intelligence for image interpretation in breast cancer screening](#)

The Health Technology Assessment (HTA) Programme is accepting Stage 1 applications to their commissioned workstream for this primary research topic.

Closes: 13:00 on 15 November 2023

[23/121 NIHR NICE rolling call \(HSDR Programme\)](#)

The Health and Social Care Delivery Research (HSDR) Programme is accepting Stage 1 applications for this funding opportunity.

Closes: 13:00 on 22 November 2023

[23/94 Interventions to reduce hospital-based medication administration errors](#)

The Health Technology Assessment (HTA) Programme is accepting Stage 1 applications to their commissioned workstream for this primary research topic.

Closes: 13:00 on 29 November 2023

[23/95 Platform studies to efficiently evaluate the clinical effectiveness of multiple interventions in areas of strategic importance](#)

The Health Technology Assessment (HTA) Programme is accepting Stage 1 applications to their commissioned workstream for this primary research topic.

Closes: 13:00 on 29 November 2023

[23/96 Supporting social and community participation for people with learning disabilities](#)

The Health Technology Assessment (HTA) Programme is accepting Stage 1 applications to their commissioned workstream for this primary research topic.

Closes: 13:00 on 29 November 2023

Information on all NIHR funding can be found on the [NIHR Funding website](#).

UKRI grant calls



**UK Research
and Innovation**

UKRI is developing funding along strategic themes with a variety of co-funders including the MRC. Look out for information on its website relating to its themes:

- Building a green future
- Securing better health, ageing and wellbeing
- Tackling infections
- Building a Secure and resilient world
- Creating opportunities, improving outcomes

Currently open UKRI funding includes:

[Experimental medicine stage one](#)

Apply for funding to undertake mechanistic studies in humans. Your application must include an intervention to investigate the

causes, progression or treatment of human disease.

This is an ongoing funding opportunity. Stage one application rounds close every April and October.

Closing date: 4 October 2023 4:00 pm UK time

[Smart Data Research UK data service: indications of interest](#)

We are inviting indications of interest to deliver Smart Data Research UK (formerly Digital Footprints) data services. You must be based at a UK research organisation to be eligible for ESRC funding.

Closing date: 10 October 2023 4:00 pm UK time

[Behavioural Science for Security and Defence Network Plus](#)

Apply for funding to develop a Network Plus to enable a new understanding of how individual and population-level risks evolve and how security threats can be identified and mitigated. One Network will be funded under UKRI's 'Building a Secure and Resilient World' strategic theme.

Closing date: 12 October 2023 4:00 pm UK time

[UKRI Creating Opportunities Evaluation Development Fund](#)

Apply for up to 12 months of funding to evaluate interventions that increase opportunities and reduce disparities in economic, health and social outcomes for people and places across the UK. You must be based at a UK research organisation and eligible for UK Research and Innovation funding.

Opportunity status:

Closing date: 31 October 2023 4:00 pm UK time

[UKRI Creating Opportunities Trial Accelerator Fund](#)

Apply for funding to test and rigorously evaluate the effectiveness of interventions aimed at spreading opportunities and reducing disparities in economic, health and social outcomes for people and places across the UK. You must be based at a UK research organisation and eligible for UK Research and Innovation funding.

Closing date: 31 October 2023 4:00 pm UK time

[Better methods, better research](#)

Apply for funding to improve the methods used by others in biomedical and health research. You must: focus your project on methods research within MRC or NIHR remit and be a researcher employed by an eligible research organisation (this includes MRC units and centres)

Closing date: 8 November 2023 4:00 pm UK time

[**Better methods, better research new investigator**](#)

Apply for funding to improve the methods used by others in biomedical and health research and develop your career. You must focus your project on methods research within MRC or NIHR remit and be a researcher who will be employed by an eligible research organisation (this includes MRC units and centres)

Closing date: 8 November 2023 4:00 pm UK time

[**Transdisciplinary funding to tackle antimicrobial resistance \(AMR\)**](#)

Apply for transdisciplinary funding to tackle AMR. Phase one (£3 million): transdisciplinary networks. Phase two (£7 million): transdisciplinary research grants to facilitate evidence-based decision-making.

You must be based at a UK research organisation and eligible for UK Research and Innovation funding.

Closing date: 9 November 2023 4:00 pm UK time

[**Funding for early-stage development of new healthcare interventions**](#)

Apply for funding to the Developmental Pathway Gap Fund (DPGF), to generate critical preliminary data to build confidence in the development strategy for a new medicine, medical device, diagnostic test, or other medical intervention development. You must be based at a UK research organisation and eligible for MRC funding.

Closing date: 15 November 2023 4:00 pm UK time

[**UK-US partnerships: ecology and evolution of infectious diseases**](#)

Apply for research funding in collaboration with the USA to understand ecological, evolutionary, and social drivers that influence the transmission dynamics of infectious diseases of animals, humans and plants. You must be based at a UK research organisation eligible for UKRI funding.

Closing date: 15 November 2023 5:00 pm UK time

[**Clinical academic research partnerships**](#)

Apply for funding to develop your research interests through a collaborative partnership. You must be a research-qualified healthcare professional at the consultant level or equivalent. You must not be undertaking any substantial research activity. You must have a research partner at an eligible research organisation.

Closing date: 16 November 2023 4:00 pm UK time.

Pre-Announcement 'heads-ups':

[**Pre-announcement: MRC Centre of Research Excellence round two**](#)

Apply for MRC Centre of Research Excellence (MRC CoRE) funding to tackle complex and interdisciplinary health challenges. You must be based at a UK research organisation and eligible for MRC funding.

Closing date: 7 February 2024 4:00 pm UK time

[**Pre-announcement: Develop interdisciplinary research proposals to tackle epidemic threats**](#)

Apply for seed funding to build interdisciplinary teams and develop research ideas to tackle epidemic diseases of humans, animals and plants. You must be based at a UK research organisation eligible for UK Research and Innovation (UKRI) funding.

For more information please [visit the UKRI website.](#)

British Academy – additional needs funding pot

The British Academy is introducing a new initiative to support researchers with additional needs. We are inviting current and new award holders who would like to apply for additional funding to support their awards or applications. Funding has been set aside to support any additional needs that applicants and award holders may require. This funding would be in addition to the amount already requested for research expenses. The British Academy is keen to be as inclusive as possible in supporting applicants and award holders with any special needs to facilitate the best possible research.

This funding pot is available for both current award holders and applicants who would like to apply for an award, but need support with submitting their application. In all cases, the Academy will need a case to be set out requesting this support, including a brief explanation as to why these needs cannot be met by the applicant's employing or host university or research organisation. Applications must be submitted online using the British Academy's Grant Management System (GMS), Flexi-Grant®. [For more information visit the British Academy website.](#)

This is a rolling funding call with no deadline, but you are recommended to apply as soon as you are able.

International and EU Research and Innovation Funding Opportunities

A bi-monthly bulletin of various non-EU international funding opportunities is available on the JRMO International Team's [SharePoint site](#). In addition, EU Horizon funding opportunities are also set out on [SharePoint](#)

Together these contain a huge number of research funding schemes from the EU and other international sources many of which are of relevance to clinical researchers.

If you don't already have access to the EU/International Sharepoint site please contact a [member of the international team](#) to obtain it.

BA/ Leverhulme Small Research Grants

BA/Leverhulme Trust Small Research Grants are available to support primary research in the humanities and social sciences. These awards, up to £10,000 in value and tenable for up to 24 months, are provided to cover the cost of the expenses arising from a defined research project. Awards are open to postdoctoral scholars (or equivalent) who are ordinarily resident in the United Kingdom. Please read the [scheme guidance notes](#) and [FAQs](#) carefully.

The application form is available on the Academy's Flexi-Grant® system. Applicant deadline: 8 November 2023. If you have any questions, please contact grants@thebritishacademy.ac.uk

Barts Charity Funding



Research Seed Grants

Barts Charity Research Seed Grants provide seed funding up to £75,000 to support the generation of research data and information that enhances our understanding of health and illness and could lead to improved lives in East London and will support a grant application to another funding organisation or pump-prime a new academic-clinical collaboration.

The charity particularly encourages applications from researchers at the start of their independent careers or those who want to develop ideas that are outside their discipline or area of expertise.

You can find out more about the Research Seed Grants on the [Barts Charity website](#).

Barts Charity welcomes applications for this scheme four times a year. The next deadline for applications is **19 October 2023**.

Research Project Grants

Barts Charity Research Project Grants provide funding up to £600,000 to support innovative research that enhances our understanding of health and illness, could lead to improved lives in East London, and will generate research outputs of local and international significance that could form the basis of substantial ongoing support from other funders. You can find out more about the Research Project Grants scheme on the [Barts Charity website](#).

Barts Charity welcomes applications for this scheme twice a year. The next deadline for applications is **12 October 2023**.

MRC CoREs (Round 2) pre-announcement call

The [MRC CoREs \(Round 2\)](#) pre-announcement call is open. Queen Mary may lead up to three outline applications in this round, one in each theme. Queen Mary can freely participate as a partner in applications led by other organisations. As with the previous round, FMD will carry out an internal demand management process. We wish to have the focus of any submissions identified and the application drafts developed before the end of 2023. To enable this, we are calling now for ideas. Please see the EoI template attached with further details.

FMD Process:

- Send completed EoIs back to [the Faculty Research Manager](#) by 3 pm: 2 October 2023.
- Presentation of ideas at an extraordinary meeting of RSB: date and time TBC. Likely to be w/c 9 October 2023.
- Decision on EoIs: FMD RSB 24 October 2023.
- FMD Executive Board approval: Thursday 26 October 2023.

The EoI should address challenges under the themes of enhancing health span, immune regulation, molecular mechanisms to inform cancer intervention or development, growth, metastasis and recurrence to develop a more integrated understanding of cancer biology and accelerate progress towards future development of mechanism-informed interventions.

If you have any further queries, please feel free to contact your respective Research Manager or the [Faculty Research Manager](#).

Action for A-T grant round open

Action for A-T has joined forces with [NATA](#) and [BrAshA-T](#) to provide two funding opportunities for A-T-related research. Applications are invited for short-term project grants, up to 3 years in duration, for a maximum award of £250,000 (to cover research post, consumables, and essential equipment). Visit the [Action for AT website](#) for further details.

Research summaries should be submitted by 16:00 on Monday 25th September.

If you have any questions in the meantime, please contact Tania.Wheeler@actionforat.org

Sight Research UK Translational Research Awards Open to Applications

Sight Research UK's [Translational Research Award](#), which may be of interest to researchers at NIHR Barts Clinical Research Facility, is now open to applications. The goal of the Translational Research Award is to accelerate the translation of scientific findings to the early stages of development of new therapies, devices, and diagnostics for sight-threatening conditions.

The standard maximum value of these Translational Research Awards is £250,000 each. If an applicant is looking to apply for more than £250,000, they should contact grants@sightresearchuk.org before applying. It will be a two-stage application process with the initial Stage 1 expression of interest submissions due in by 31st October 2023. Application forms and more detailed guidance are available on our [website](#).

Fellowships and related opportunities

UKRI fellowships



UK Research and Innovation

[Transition support for MRC intermediate fellows](#)

Apply for funding for up to two years. This includes half of your salary. The scheme is for current fellows whose research has been affected by several issues. You can apply if you currently hold an MRC career development award or clinician scientist fellowship and are in the final 18 months of your fellowship. Closing date: 19 October 2023 4:00 pm UK time

[Daphne Jackson fellowship](#)

These fellowships are for those looking to return to a research career after a break. Fellowships combine a personalised retraining programme with a challenging research

project. They are flexible, usually lasting two years at 0.5 full-time equivalent, although some UKRI funders may award longer.

Open - no closing date

[Researching ME/CFS: highlight notice](#)

Apply for funding to research myalgic encephalomyelitis/chronic fatigue syndrome, also known as ME/CFS.

Open - no closing date

[Researching motor neurone disease: highlight notice](#)

Apply for funding to research motor neurone disease (MND).

You can get funding through any grants from MRC research boards or panels and MRC fellowships

You should apply through the existing funding opportunity that is most relevant to your science area and career stage.

Open - no closing date

[Renewal scheme for current Future Leaders Fellows](#)

Successful applicants to the Future Leaders Fellowships (FLF) scheme have the

opportunity to extend their four-year fellowship by up to a further three years. This funding opportunity is available to current FLF award holders only and should be a continuation of the original FLF fellowship.
Open - no closing date

For more information [visit the UKRI website](#)

NIHR fellowship highlight



[NIHR Development and Skills Enhancement Award \(DSE\)](#)

The NIHR Development and Skills Enhancement Award submission window is now open and applications are welcome from non-NIHR Academy members as well as Members. Applications can be submitted all year round.

Closes: 13:00 on 24 November 2023

Information on all NIHR funding can be found on the [NIHR Funding website](#).



Researchers at Risk Fellowships

The British Academy with [Cara \(the Council for At-Risk Academics\)](#) has established the *Researchers at Risk Fellowships Programme* with the support of the Academy of Medical Sciences, the Royal Academy of Engineering and the Royal Society. The Programme is receiving £3 million of government funding from the Department for Business, Energy and Industrial Strategy. The Nuffield Foundation, an independent charitable trust, is contributing £0.5 million towards the scheme. This is an ongoing fund. For more information, please visit [the British Academy website](#).

British Academy/Leverhulme Senior Research Fellowships

The British Academy/Leverhulme Senior Research Fellowships are intended to enable established scholars to bring to completion a significant piece of research through a period of leave from their usual teaching and administrative duties. The only cost payable on this scheme will be the salary of a replacement

lecturer, and the Fellowship is tenable for one year. Call closes 15 November 2023, results by March 2024. For further information please read the [further guidance and scheme notes](#).

Innovation Fellowships – Route A: Researcher-Led

The researcher-led route of a dual-route Innovation Fellowships scheme provides funding and support for early-career and mid-career researchers in the humanities and social sciences to partner with UK-based organisations and businesses in the creative and cultural, public, private and policy sectors, to address challenges that require innovative approaches and solutions. Researchers will be supported to develop new and deeper links beyond academia, enabling knowledge exchange and individual skills development. Awards are up to £120,000 on a Full Economic Costing basis and tenable for six to 12 months. Researchers are expected to apply with a partner organisation that they have self-identified and commit between 0.4 and 0.8 FTE time to the Fellowship. The call closes on 11 October 2023. Results by January 2024. For further information please read the [further guidance and scheme notes](#).

If you have any questions about British Academy competitions please contact grants@thebritishacademy.ac.uk

HARP 3-year clinical PhD Programme



HARP is a 3-year clinical PhD Programme dedicated to redressing health inequality through representative research in an inclusive environment. We are looking for enthusiastic fellows who would be interested in projects addressing research topics related to underrepresented populations and diseases due to social inequalities (demographic and protected characteristics), marginalisation (socioeconomics, education, lifestyle choices, legal/housing status), or health status (examples - mental health or rare diseases).

Applicants can be of any clinical health profession including medical graduates, dentists, nurses, physiotherapists, clinical psychologists, and many others. Please visit

[the HARP website](#) for further information, including application details.

Potential applicants can apply to one of two programmes:

- PhD fellowships - candidates are invited to apply with a project which fits to the HARP PhD Programme remit by the deadline of 13th November 2023.
- Pre-doctoral training programme - candidates with no previous formal research experience are invited to apply for a 1-year pre-doctoral training phase. Deadline 8th January 2024.

2023 Workforce: Training and Education Directorate (NHS England) ICA Internship and Post Doctoral Bridging schemes

NHS England, working with London South Bank University (LSBU) in collaboration with King's College, London, has announced the launch of the 2023 Workforce, Training and Education Directorate (NHS England) ICA Internship and Post Doctoral Bridging schemes.

These schemes fall into various types and are listed below with links:

- [Internships](#)
- [Pre-Doctoral Bridging Scheme](#)
- [Post Doctoral Bridging Scheme](#)

A full FAQ document, covering all the schemes, is available on the [South Bank Innovation](#) website.

APEX Awards

The [APEX Awards](#) are a funding opportunity designed to promote collaboration across academic disciplines through the support of world-leading interdisciplinary research projects. Supported by the Leverhulme Trust, the British Academy, in partnership with the Royal Academy of Engineering and [the Royal](#)

[Society](#), is inviting applications from established (independent) researchers employed at a UK university, or not-for-profit research institution, with a strong track record in their respective area, for an exciting opportunity to pursue genuine interdisciplinary and curiosity-driven research to benefit wider society. Successful applicants will be expected to work in collaboration with relevant researchers from other disciplines.

Applications must be within the remit of more than one of the three Academies, and awards of up to £100,000 to fund staff costs can be held for up to 24 months with no more than 25 per cent of the total requested used for associated research costs. Successful applicants will also have the opportunity to apply separately for up to £10,000 to create and lead public engagement projects linked to their APEX award. Closing date: **1 November 2023, 15:00 (GMT)**

To find out more about this call please contact: apex@royalsociety.org.

Healthcare Professional Clinical Research Training Fellowships

Barts Charity's PhD Fellowship scheme provides opportunities for local



healthcare professionals to undertake health-related research that could improve the lives of people in East London.

The [3-year PhD Fellowship scheme](#) is open to all healthcare professionals including [Allied Healthcare Professionals](#), Clinicians (including General Practitioners and Dentists), [Healthcare Scientists](#), Midwives, Nurses, Pharmacists, and Psychologists.

The deadline for applications is 2 November 2023.

Research Professional

Research Professional (formerly Research Research) has an easy-to-use sign-up process: <http://www.researchprofessional.com/>

Funding information: [Up-to-the-minute information about all types of research funding can be found on the Research Professional website – to access this click here \(account and password required\).](#)