

Joint Research Management Office Research News Bulletin

Issue 127

3 May 2023

The Research News Bulletin is edited by Nick Good ~ nicholas.good@nhs.net

35 years of Research Delivery!



"We are all research" says Gerry Leonard

After 35 years at Barts and Queen Mary Gerry Leonard, Director of Research Development at Barts Health, retired last week.

Gerry has been associated with R&D at both Barts Health NHS Trust and Queen Mary University of London for over a generation.

He started his career in Education in 1980 as Bursar and then Senior Administrative Officer at Barnet College before moving on to the Role of Deputy Chief Finance Officer at the Middlesex Polytechnic in 1984. He moved to Queen Mary College in 1988 (because the pay was much better) as Assistant Secretary for Research and so commenced his long association with R&D in the university and NHS sectors.

Gerry said "The early days at QMC would seem odd to many of us today, with tradition and history playing a big part in the University's corporate identity. What was really enjoyable was the close working relationships staff had and the family-like atmosphere that existed, particularly amongst the

administrative staff, most from the East End of London, which made it a pleasure to work there. Indeed, some of the staff who were there when he arrived, still work in the JRMO."

During his time at the University, Gerry participated in several mergers starting with Westfield College, followed by QMWC and St Bartholomew's and The London Hospital Medical Colleges, which was interesting. Over the years these mergers have led to the establishment of QMUL as one of the leading research establishments in the UK.

In 1996 Gerry moved to what was then the Royal London Hospitals NHS Trust and as Assistant Director of Research and Development (Finance), was tasked with the job of setting up a research office for the Trust, developing centralised governance and finance systems, that up to that point did not exist. He also focussed on improving how the Trust contracted for its commercial trials and constructed the first draft of the commercial Clinical Trial Agreement that is still largely in use today. The small team soon established core policies and sops and worked with the Trust's clinical teams to coordinate its research activities and develop capacity, as a result of which the Trust's research activities blossomed.

In 2004 the now Barts and the London (yes, yet another merger) R&D Office merged with the QMUL Medical School Office to form a joint Research and Development Office and Gerry was appointed Head of Research resources by QMUL. In this role he played a key part in creating what was at that time, the UK's first joint University and NHS Trust R&D research management office. [Cont...]

Bulletin contents

<u>News</u>	1
35 years of research delivery	3
'Be Part of Research' now available through the NHS App	3
#StepForward - become an NHS Research Ethics Committee member	3
Last call for International Clinical Trials Day	4
HRA pledges to make it easier to do clinical trials that everyone can trust	4
'HRA Now' can send you everything you need to know about HRA changes	5
Barts Charity refreshes its 'look'	5
Queen Mary Ethics of Research Committee Update	5
Standard Operating Procedure changes	6
<u>Our research</u>	6
The Royal London CRF reopens	6
Clinical trial shows tumour-starving drug improves survival	6
Genes & Health secures £2m MRC Award	7
SWIFT and ACIT SWIFT trials at the Royal London	7
Queen Mary researcher receives major funding award	8
Identification of disease-causing proteins leads to new treatments	8
<u>Events</u>	9
Queen Mary's Festival of Communities	9
NHS R&D Forum Annual Conference	10
JRMO drop-in sessions	10
<u>Training</u>	10
JRMO GCP Training	10
Distance learning MRes in Health Science programme	11
NIHR Learning for Involvement	11
NIHR Applied Research Collaboration (ARC) North Thames	11
UCL BRC PPIE Training	11
Queen Mary Centre for Public Engagement: Introduction to involving patients in your work	12
Centre for Public Engagement PPI: Training and Funding	12
<u>Research funding</u>	12
NIHR grant calls	12
UKRI grant calls	13
JRMO International Team funding bulletin	17
Barts Charity grants	18
<u>Fellowships and related opportunities</u>	18
<u>Research Professional</u>	20

~ Please remember to upload your recruitment data regularly ~

It is the responsibility of the research team to ensure the EDGE record is accurate and that all research activity (recruitment) is recorded.

If you need any EDGE training or require further EDGE accounts, please contact zabed.ahmed@qmul.ac.uk in the JRMO

Gerry Leonard... [Cont.]

Finally, Gerry successfully applied for the role of Director of Research Development in 2012, following yet another merger, this time between Barts & The London NHS Trust, Whipps Cross and Newham University Hospital Trusts, which created Barts Health NHS Trust.

His retirement is the culmination of a career in research administration spanning 35 years during which time he has significantly contributed to the development of research at the national and local levels. His input at regional and national levels included working with the Department of Health and NIHR on national contracts for commercial and non-commercial research, the establishment of three succeeding Clinical Research Networks, a national strategy for research and costing and pricing for research. It is safe to say that Gerry has built a considerable reputation in research nationally and is well-known and regarded by colleagues in the UK NHS and university research community.

An era ends with Gerry's departure but the work of supporting our researchers, helping set up and review their studies, and assisting them with financial management, research governance and good clinical practice advice, continues.

'Be Part of Research' now available through the NHS App

Be Part of Research, the online service that makes it easy for people to find and take part in health and care research is now available through the [NHS App](#) in England.

The service, run by the NIHR, helps members of the public understand what research is, and what it might mean to take part, as well as showing what research is currently happening



across the UK. [More information is available on the NIHR website.](#)

#StepForward - become an NHS Research Ethics Committee member

The HRA is inviting people to #StepForward and become a Research Ethics Committee (REC) member.

REC members meet virtually to review exciting new research studies for some of the biggest challenges in health and social care, including cancer and dementia. It is important that REC committees have insight from different perspectives so that we can all trust their decisions. The HRA is particularly looking for people with no healthcare or research experience. Regular training and support will be provided and it is an opportunity to work with people from a range of backgrounds and learn new skills.



More information about this can be found [on the NHS HRA website.](#)

New resource for researchers aiming to increase diversity in research participation published

NHS England has co-developed [a guide for researchers](#) to support their work to encourage more people to take part in research. The guide has been developed in partnership with several community groups and involvement from researchers. It identifies the barriers to participating in research faced by under-represented groups and provides practical tips to explore how these can be addressed.

[More information is available on the NIHR website.](#)

Last call for International Clinical Trials Day

International Clinical Trials Day (20 May 2023) is fast approaching, and time is running out to get involved in this year's event!

This year we will be showcasing some of the great work our researchers have carried out over the past year, continuing the conversation of how we are striving to be more inclusive in our healthcare research. Featuring examples of best practice in community and public engagement, members of the Applied Research Collaboration (ARC) North Thames, and NIHR representatives on the Research Ready Community Champions (RRCC) programme are but a few confirmed speakers, with more to be announced soon!

We are still looking for speakers and researchers to deliver activities across all our hospital sites. Examples of researcher-led activities include setting up a stall in common areas or clinics and sharing info about current/recent studies, displaying lay summary posters on our poster boards, or roaming the wards with a trolley and research-focused activities/information. ICTD offers a great opportunity to engage with patients, the public and staff on the topic of research and we want to make the most of this. Additionally, please get in touch if you are a researcher looking to share news about the inclusive work you've been doing. This may be as simple as featuring an inclusive event you have delivered on our webpages, or a profile for staff/teams who are doing great work in this area. We are working with comms to ensure all our activities will be supported and publicised, spreading awareness on our inclusive research and all that is happening across the Trust concerning ICTD. If you would like to be a speaker or get involved in any capacity, we want to hear from you! Please register your interest with Neeta and James as soon as possible at: Patientsinresearch.bartshealth@nhs.net

HRA pledges to make it easier to do clinical trials that everyone can trust

The HRA has welcomed the [response to a consultation on clinical trials regulations by the Medicines and Healthcare Products Regulatory Agency \(MHRA\)](#).

The MHRA response is, the HRA said, a clear and exciting opportunity to ensure that clinical trials can speed up diagnosis, enhance treatment and enable the NHS to deliver world-class care, as well as cement the UK's position as a life-science superpower.

The response, which will be used to inform new legislation and guidance, follows a public consultation by our organisations in partnership. The majority of those who took part in the consultation agreed that change is needed to make it easier to do clinical trials that everyone can trust. There was strong support for increasing the transparency around clinical trials, the importance of meaningful public involvement in clinical trials and increasing diversity among those taking part in these trials while ensuring that the UK is the easiest place in the world to do research that people can trust.

It sets out a proportionate and agile approach to signal the UK's high expectations for how clinical trials should be conducted, using a mix of legislation and guidance so that everyone understands what is expected, how to do it and can easily show us what they have done.

The HRA has pledged to make it easier to do health and social care research with and for everyone. We will work with patients and the public, researchers, commercial and non-commercial research funders to inform legislative change and develop guidance that is proportionate, flexible and reflects the scale and nature of different clinical trials, helping you to do more high-quality clinical trials. One of the key principles behind the new legislation is streamlining the regulation of trials, to make it easier to do high-quality research that people can trust. This includes removing duplication, and ensuring research is more proportionate to risk. The legislation also enables more innovative, people-centred trials such as decentralised trials.

One of the best ways to make sure trials are efficient and successful is to get input from relevant members of the public. Unfortunately, some research studies are still designed without meaningful public involvement; [analysis by the HRA shows that more than half of clinical trials say they have not involved the public](#).

The HRA believes that public involvement in clinical trials is always possible, and is working with MHRA to help researchers increase the diversity of people taking part in research in

the UK. It has launched [new web content to help researchers increase the diversity](#) of people taking part in research so that it can benefit everyone.

Help the HRA

The HRA is looking for people to support its work with the MHRA to develop new guidance for researchers on how to better involve the public and ensure diverse participation in clinical trials and continue to improve transparency practice. This opportunity is open to researchers, research participants and anyone involved in making research happen, including members of Research Ethics Committees. To hear first about opportunities to get involved, please [register your interest](#).

‘HRA Now’ can send you everything you need to know about HRA changes

HRA Now, is the HRA’s operational bulletin, designed to keep you up-to-date with the latest operational news and developments from across the organisation. The target audience for HRA Now is those working in and supporting the set-up and delivery of research, from applicants and sponsors through to delivery teams. Here are some recent updates you may have missed from [HRA Now](#):

- [Updated guidance for amendments and the NHS Digital merger with NHS England](#)

- [New IRAS user guide for CTIMPs](#)
- [Updated UK model non-commercial agreement](#)

You can [sign up to receive HRA Now operational updates](#).

Barts Charity refreshes its ‘look’

Barts Charity recently launched a new website with a fresh new look and feel to their brand to be more reflective of East London’s vibrancy and diversity.



If you're a Barts Charity grant holder you may be using the Barts Charity logo and assets as part of your work. You can now find the new logos (see above) and other revised branding information [on the Barts Charity website](#). Please update anything that has Barts Charity branding on it.

If you have any questions about the new brand you can contact Barts Charity at comms@bartscharity.org.uk

Queen Mary Ethics of Research Committee Update

‘QM Ethics’ online application coming soon - Summer 2023

The Word-based ethics application form is soon to be replaced with a new online ethics application software. The research ethics software boasts user-friendly forms, real-time collaborations with researchers, electronic authorisations from supervisors and an auto-submission process. More information including a link to the website will be available in the coming weeks, accessible via your usual Queen Mary log-in. Applications up until the launch should continue to be made using the [current application process](#). If you have any

questions the QM ethics team are contactable at research-ethics@qmul.ac.uk

Calling all medics with clinical trials background

The Queen Mary Ethics of Research Committee is seeking individuals interested in joining one of our Research Ethics Panels in a voluntary capacity as an expert member. We are looking for people interested in research to offer their expertise and enthusiasm to help ensure our research practices meet recognised best practices and ethical standards. As a member of a Panel, you will work with other ethical reviewers from across Queen Mary to review studies from across all Faculties, meeting only twice a year. Please contact us for more information about what the role entails: research-ethics@qmul.ac.uk

Standard Operating Procedure changes

Since the last R&D News Bulletin was published, the following SOPs and associated documents have been updated and released:

SOP 17a Amendments sponsored studies (For the JRMO)

SOP 17c Amendments sponsored studies (For Researchers)

- Associated Document 1 Confirmation of Costs for Amendments Form

SOP 20 AD1 Corporate Records Guidelines

- Associated Document 1: Archiving Transferring research study records to Corporate Records

SOP 31 Non-Compliance and Serious Breach reporting

- Associated Document 1: Non-Compliance guidance document
- Associated Document 2: Non-Compliance Notification form
- Associated Document 3: JRMO Root Cause Analysis Template
- Associated Document 4: Non-Compliance notification of closure certificate

SOP 38d Data Management

- Associated Document 1: CRF design guidance
- Associated Document 2: Good documentation practice
- Template 1 Data Management Plan Template

Guidance documents

- Guidance documents for e-signatures
- These and all JRMO SOPs can be found [on the JRMO website](#)

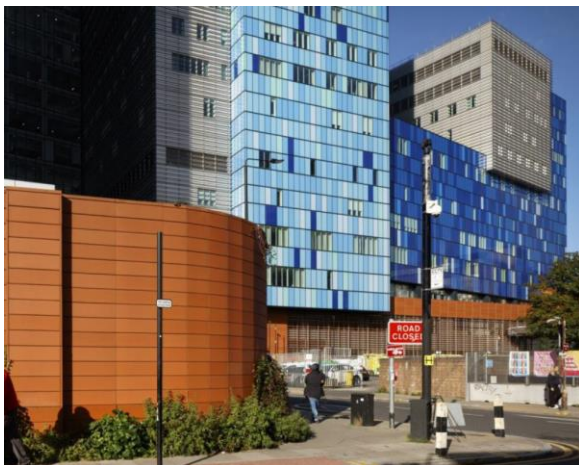
Our research

The Royal London CRF reopens

The [Clinical Research Facility on the eleventh floor at the Royal London Hospital](#) reopened in April.

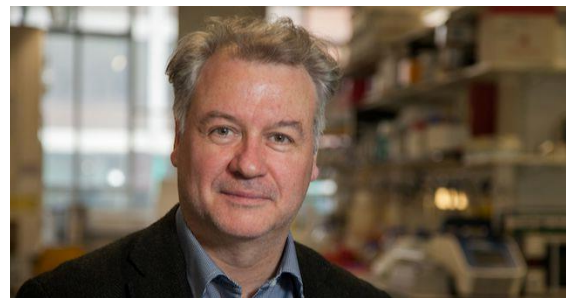
The team is pleased to welcome any researchers wishing to conduct their research at the Royal London and is keen to provide support, storage and clinical research space to see patients in an outpatient facility.

The CRF Operations Director, Jo Morgan, is happy to talk through research needs and how the team can help to deliver them. Please contact Jo at 07534 637 333 or email Jo.morgan7@nhs.net.



Clinical trial shows tumour-starving drug improves survival

An innovative therapy provides new hope to patients with malignant mesothelioma – a rare but rapidly fatal type of cancer with few effective treatment options – according to results presented by [Dr Peter Szlosarek](#).



Dr Szlosarek, Professor of Medical Oncology at Queen Mary's Barts Cancer Institute, presented his team's results from the ATOMIC-Meso clinical trial in partnership with Polaris Pharmaceuticals, Inc.

The findings show that the new drug, called ADI-PEG20, extends the median survival of patients compared with the current standard treatment. This moves the drug closer to final approval by the US Food and Drug Administration (FDA), an achievement that would represent the first such approval of a

new chemotherapy drug for this disease in 15 years.

More information can be found on [the Queen Mary website](#).

Genes & Health secures £2m MRC Award

Genes & Health is a pioneering genetic research programme that aims to improve health for British Bangladeshi and British Pakistani communities. Launched in 2014, the community-focused project has recruited over 54,000 volunteers across London, Bradford, and Manchester. Genes & Health brings together internationally renowned scientists to make discoveries, using cutting-edge techniques such as discovering 'knockout genes,' developing polygenic risk scores, and helping with the design of new drug treatments.

In recognition of this great work, the Medical Research Council has awarded Genes & Health a prestigious 'Longitudinal Population Study' award ensuring its long-term sustainability to fight health inequality in an underrepresented population of British South Asians. As part of its aim to improve the lives of South Asians, Genes & Health will develop and deliver an innovative online platform that will be used to generate large-scale mental health research.



Dr Sarah Finer, Principal Investigator of the new award said: "We are excited to receive funding to expand Genes & Health over the coming years and continue to make critical scientific discoveries that help improve the health of British Bangladeshis and British Pakistanis."

If you are British Pakistani or Bangladeshi and would like to get involved and make a

meaningful contribution to scientific advancements in health and disease research, visit the [Genes & Health site](#) to be part of shaping our future.

SWIFT and ACIT SWIFT trials at the Royal London

The SWIFT trial is led by NHS Blood and Transplant (NHSBT) and will involve 10 air ambulance charities across the country.

Some Air Ambulances currently carry blood products to give to people at the scene of accidents. In the SWIFT trial, they will also carry whole blood. This is blood as it is taken from the arm of a donor. It includes all the different blood components together, such as red blood cells, plasma, and platelets. Previous studies, including on military casualties in Afghanistan, have indicated whole blood could have better outcomes for trauma patients, including a greater chance of survival.



Whole blood may work better because it contains platelets. Platelets are the cell fragments which help the blood to clot. Platelets are difficult to store – they have a short five-day shelf life, must be stored between 20 and 24 degrees Celsius, and need constant gentle movement to help them stay oxygenated. This means they are very difficult to use outside of hospitals.

Carrying and transfusing one blood product could also be lighter and simpler. It could enable faster treatment, at a time when every minute counts. And it could make the transfusion process easier and reduce risk, a crucial benefit in difficult and fast-moving incidents.

There is already evidence that whole blood could lead to reduced mortality and reduce the amount of blood needed after patients arrive at the hospital. However, only a fully randomised controlled trial such as SWIFT can provide definitive answers.

ACIT SWIFT began in January 2023 at the Royal London Hospital and so far, has included only 4 patients but as time goes on, the number of sites will grow in conjunction with the opening of SWIFT study sites and we aim to have a total of over 300.

ACIT SWIFT will add patients from the SWIFT trial to the long-running ACIT study. The ACIT SWIFT study uses a blood sample (taken on admission to the hospital), combined with some of the data collected in the SWIFT study to help us improve the care of patients who suffer serious injuries (trauma).

To find out more about these trials please contact j.piercy@qmul.ac.uk

Queen Mary researcher receives major funding award

Philip Eaton, Professor of Cardiovascular Biochemistry at Queen Mary University of London, has been awarded €2.5 million by the [European Research Council](#) (ERC) to help tackle cardiovascular disease.



Professor Eaton's funding will enable him and his team to investigate the preventive role the molecule nitroxyl can have for cardiovascular disease. Nitroxyl is formed in cells, and drugs are currently in development that releases it to help prevent heart failure. However, little is currently known about how exactly the molecule works, and why it has the effect that it does. Professor Eaton and his team hope that by discovering more about how it controls the way our heart works, we can use this knowledge to create additional therapies for cardiovascular disease - the leading cause of death in the world.

In total, 218 Advanced Grants were awarded to researchers across Europe. Totalling €544

million, they support cutting-edge research in a wide range of fields, from medicine and physics to social sciences and humanities.

The ERC Advanced Grant funding is amongst the most prestigious and competitive EU funding schemes, providing researchers with the opportunity to pursue ambitious, curiosity-driven projects that could lead to major scientific breakthroughs. They are awarded to established, leading researchers with a proven track record of significant research achievements over the past decade.

Professor Philip Eaton, Professor of Cardiovascular Biochemistry at Queen Mary University of London, said: "I'm honoured that my project has been chosen for such a prestigious grant. So much progress in preventing and treating cardiovascular diseases has been made since I first entered the field, but almost 18 million people globally still die from them every year. We hope our research will be able to shed light on nitroxyl. It's a very promising lead and may help unlock new treatments for people at risk of heart disease, letting them live healthier, happier lives."

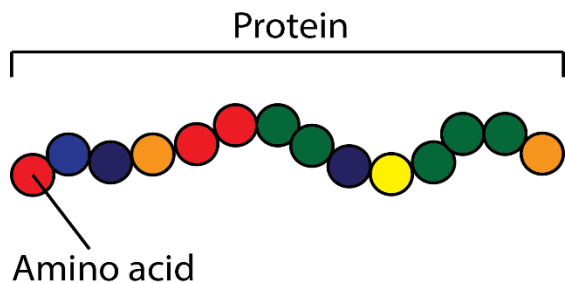
Identification of disease-causing proteins leads to new treatments for diseases like diabetes

New research has identified hundreds of proteins that might contribute to the onset of common, chronic metabolic diseases such as type 2 diabetes, and consequently pathways to potential treatments.

The study, published in [Nature Metabolism](#), was led by an international research team from the Medical Research Council (MRC) Epidemiology Unit, University of Cambridge, the Precision Healthcare University Research Institute (PHURI) at Queen Mary University of London, and the Berlin Institute of Health at Charité (BIH) at Universitätsmedizin Berlin in Germany.

The researchers successfully linked more than 900 regions in the human genome to almost 3000 proteins in our blood, with many of these not previously identified. The team then applied these findings to existing genetic studies for hundreds of diseases and found more than 500 gene-protein-disease links.

As an example, the team showed for the first time that people with high levels of a hormone called GRP are less likely to develop type 2 diabetes, most likely because it decreases the chances of becoming overweight. This 'proteogenomic' evidence supports GRP as a potential target for the prevention and/or treatment of diabetes.



The study has led to a greater scientific understanding of hundreds of genome regions, which open the door to more targeted and ultimately successful treatment options in the

future as proteins are essential functional units of the human body and the most common target of drugs that exist today.

Senior author Professor Claudia Langenberg, director of the Precision Healthcare University Research Institute (PHURI) at Queen Mary University of London and MRC Investigator and program lead at the MRC Epidemiology Unit at the time of the study, said: "Thousands of regions in our genome have been identified to increase our risk for developing different diseases, but for most of them we have a poor understanding of why this is. By measuring and integrating information on thousands of proteins in human plasma, we were able to create robust links between the genes that encode these proteins to many different diseases and demystify about 200 regions. This narrows down the potential therapeutic targets at each genomic region, often a bottleneck for translation of genomic discoveries."

Events

Queen Mary's Festival of Communities

Saturday 10th and Sunday 11th June, 11.30-4.30 pm



Join the team for a fantastic weekend of free family fun at the Festival of Communities!

Exploring living and learning together in Tower Hamlets, and showcasing the best of our borough, there will be lots of activities, games and demonstrations for all ages. The Festival of Communities is hosted by Queen Mary University of London in collaboration with local organisations and groups who will be running hands-on activities that showcase local research, creativity, and community initiatives. There will be many Barts and FMD colleagues delivering activities over the two days to engage residents with their work – as well as free face painting, local food traders and inflatables!

The Festival will be running from 11.30 am-4.30 pm in Stepney Green Park on Saturday 10th June and the Queen Mary Mile End Campus on Sunday 11th June, so put both dates in your diary and we hope to see you there.

To find out more and to see the programme, [visit the Festival of Communities website.](https://www.qmul.ac.uk/festival)

NHS R&D Forum Annual Conference

This year's NHS R&D Forum Annual Conference (RDF23), being held in association with the HRA, is taking place in Gateshead from 21 to 23 May.



Speakers from across the health and social care research sector, including our Chief Executive, Matt Westmore, and our Director of Approvals Service, Janet Messer, will deliver talks and workshops on a wide range of research topics to more than 700 delegates.

To find out more please visit the [R&D Forum website](#).

JRMO drop-in sessions

JRMO drop-in sessions take place on the second Wednesday of every month, 10-11 am. To attend a session during that time please [follow this MS Teams link](#)

You can of course continue to contact the team at any time - research.governance@qmul.ac.uk - if you have a query regarding research governance, amendments or other GCP-related matters.

If you have a question about any of the following, come along and the team will be available on a first-come-first-served basis: Study set-up

- Research governance and sponsorship
- Research ethics
- GCP advice
- Research passports and staff access
- Finance and funding
- Costing and contracts
- Patient and public involvement

Training

JRMO GCP Training

Both Queen Mary and Barts Health require all those undertaking clinical research at our sites to attend appropriate training. It is mandated that all researchers conducting MHRA-regulated trials must complete a GCP course and refresh it every two years. The same is advised as the best practice for all other researchers.

More details regarding research-specific training can be found in [JRMO SOP 34a Researcher Training](#) and [SOP 12b Associated Document 2: JRMO Sponsorship review proportionality document](#)

To book a course please email research.governance@qmul.ac.uk with the subject title 'GCP COURSE BOOKING', including in the body of the email the name of the JRMO course you wish to attend (see below). Your place will be confirmed by email.

JRMO Good Clinical Practice (GCP) training is currently being delivered online, via Zoom.

The following courses are available to book for the 2022-2023 academic year:

- GCP Refresher - 11 May
- Governance Training Course: Study set-up – 17 May
- GCP for MHRA Regulated Studies – 24-25 May
- GCP for non-CTIMP research – 1 June
- Governance Training Course - Managing a Study – 7-8 June
- GCP Refresher – 15 June
- GCP for MHRA Regulated Studies – 5-6 July
- Data Management and Databases – 12-13 July
- GCP Refresher – 19 July
- GCP for Clinical Investigations (ISO14155) – 10 July

More information is [on the JRMO website](#).

Distance learning MRes in Health Science programme

If you are looking for a distance learning, postgraduate research-focused study from September 2023, the MRes Health Science may be a programme of interest to you.

The University of Winchester offers a challenging and stimulating MRes programme that has both taught and independent study elements in a discipline of Health and/or Well-being of your choice.

If you would like to apply to enrol on the MRes Health Science programme visit [How to apply - University of Winchester](#). The deadline for applications is 15th May 2023.



NIHR Learning for Involvement

Centre for BME Health BAME Toolkit: The Centre for BME Health has produced a checklist to help researchers when designing and recruiting to studies, as well as when conducting PPIE activities. The toolkit aims to capture best practices and provide researchers with a framework on how to improve the participation of people from ethnic minorities in research. Available on their [website](#).

Improving Inclusivity within Research: BAME groups are more likely to suffer from poorer health outcomes and health and social care inequalities and are less likely to be represented in health and social care research studies. This [training module and toolkit](#) from CRN East Midlands and the Centre for BME Health will help your research become more inclusive of ethnic minority groups.

Patient and Public Involvement Toolkit: Involving People's Public and Patient Involvement [Toolkit](#) is a very useful resource which will take you through each stage of the engagement process. This will help you understand what you are trying to achieve, plan how you will achieve it, produce a report based on your findings, and inform how your services can meet the needs of local people better.

NIHR Applied Research Collaboration (ARC) North Thames

The NIHR ARC has made a series of workshops and webinars readily available on its [website](#). The webinar titled 'Patient and public involvement in Research and Co-production' offers an introduction to PPIE, covering what it is, who is involved, why it is important, and how it can be done effectively. Public contributors share their experiences of integrating PPIE into their work and provide real-world context for the session. Click [here](#) to view their Youtube channel.

UCL BRC PPIE Training

University College London's BRC provides regular PPIE training sessions for researchers.

The award-winning sessions build up researchers' skills and confidence in involving laypeople in activities, including setting research priorities and designing protocols. Evaluation in BMJOpen (Yu et al. 2021) showed marked increases in researchers' PPIE confidence after our training.

There are five modules available, including an introduction to PPIE and sessions on running focus groups, finding people and filling in grant applications. You can attend all 5 modules to build up knowledge progressively or you can pick the one that best suits you.

The training is available to all researchers, although non-UCL/ UCLH/UCLP-related staff do have to pay a small fee for each workshop attended.

For more information, please visit [the UCLH BRC website](#).

Queen Mary Centre for Public Engagement: Introduction to involving patients in your work

This workshop will introduce how engaging patients, carers and the public can serve as an effective means to inform health-related research throughout the research process. When? Wednesday 15 February: 2 pm-4 pm [Book the Introduction to involving patients in your work session](#) (search course code: RD-PE-006)

Please note: Barts staff are welcome to attend the session but may be unable to book using the online system. If this is the case, please contact the CPE directly to book your space via publicengagement@qmul.ac.uk

Centre for Public Engagement PPI: Training and Funding

If you would you like to learn more about Patient and Public Involvement the next

[‘Introduction to involving patients in your work’](#) training session is Tuesday 9 May from 2 pm-4 pm.

If you’re looking for funding to support PPI, take a look at the [PPI Small Grants scheme](#). It’s designed to provide up to £600 of funding to support activities which engage patient groups, service users or well-defined audiences with health research, teaching, or core business of Queen Mary. The deadline is the 15th of every month and the last deadline of 2022-23 is Monday 15th May.

Research funding

NIHR | National Institute
for Health Research

NIHR grant calls

- [Invention for Innovation - Product Development Awards Call 26](#)
i4i Product Development Awards (PDA) supports the translational research and development of medical devices, in vitro diagnostics and high-impact patient-focused digital health technologies for ultimate NHS use.
Closes: 13:00 on 23 May 2023
- [Programme Development Grants - Competition 36](#)
Applications are invited for Programme Development Grant funding. Programme Development Grants are designed to increase the rate and number of successful applications for a full Programme Grant by supporting the completion of the necessary preparatory work to suitably position the research team to submit a competitive Programme Grant application.
Closes: 24 May 2023
Webinar
- [Invention for Innovation - Challenge 15](#)
The NIHR Invention for Innovation (i4i) programme is inviting proposals to Call 13 of its Challenge Awards on real-world implementation.
Closes: 13:00 on 25 May 2023
- [23/8 Care \(Education\) and Treatment Reviews \(C\(E\)TRs\) for people with learning disabilities and/or autistic people](#)
The Health and Social Care Delivery Research (HSDR) Programme is inviting applications to better understand the use, delivery and impact of Care (Education) and Treatment Reviews (C(E)TRs) for adults and children with learning disabilities and/or autistic people.
Closes: 13:00 on 31 May 2023
- [23/18 Reducing compound pressures on the NHS and social care \(HSDR Programme\)](#)
The Health and Social Care Delivery Research (HSDR) Programme is accepting Stage 1 applications to this cross-programme funding opportunity.
Closes: 13:00 on 31 May 2023
- [23/14 Motor neurone disease highlight notice \(HSDR Programme\)](#)
The Health and Social Care Delivery Research (HSDR) Programme is accepting Stage 1 applications to this cross-programme funding opportunity.
Closes: 13:00 on 31 May 2023
- [23/10 Health and Social Care Delivery Research Programme researcher-led](#)
The Health and Social Care Delivery Research (HSDR) Programme is accepting Stage 1 applications for this funding opportunity.
Closes: 13:00 on 31 May 2023
- [23/11 NIHR James Lind Alliance Priority Setting Partnerships rolling call \(HSDR Programme\)](#)
The Health and Social Care Delivery Research (HSDR) Programme is accepting Stage 1 applications for this funding opportunity.
Closes: 13:00 on 31 May 2023
- [Research for Social Care - Comp 7](#) - Applications are invited for research

proposals that will generate evidence to improve, expand and strengthen the way social care is delivered for people who draw on social care support and services, carers, and the public.

Closes: 13:00 on 21 June 2023

- **[Public Health Research Programme – future topics](#)**
The Public Health Research (PHR) Programme is considering the following topics for future commissioned research. Potential advert date: 27 June 2023
- **[IAT Clinical Lectureships in Medicine 2022](#)**
NIHR IAT CLs provide opportunities for postdoctoral research and facilitate applications for further research funding. Closes: 13:00 on 30 June 2023
- **[Research for Patient Benefit - Competition 51](#)**
Applications are invited for research proposals that are concerned with the day-to-day practice of health service staff, and that have the potential to have an impact on the health or well-being of patients and users of the NHS. Closes: 13:00 on 12 July 2023
- **[Innovation Fund to Reduce Demand for Illicit Substances: Phase 2 Stage 1](#)**
Innovation Fund to Reduce Demand for Illicit Substances: Phase 2 Stage 1 Potential advert date: 19 July 2023
- **[23/45 Health and Social Care Delivery Research Programme researcher-led](#)**
The Health and Social Care Delivery Research (HSDR) Programme is accepting Stage 1 applications for this funding opportunity. Closes: 13:00 on 26 July 2023
- **[23/34 Screening for COPD during the targeted lung health check](#)**
The Health Technology Assessment Programme is accepting Stage 1 applications to their commissioned workstream for this primary research topic. Closes: 13:00 on 26 July 2023
- **[23/46 NIHR NICE rolling call \(HSDR Programme\)](#)**
The Health and Social Care Delivery Research (HSDR) Programme is accepting Stage 1 applications for this funding opportunity. Closes: 13:00 on 26 July 2023
- **[23/35 Extended duration tocilizumab for giant cell arteritis](#)**
The Health Technology Assessment Programme is accepting Stage 1

applications to their commissioned workstream for this primary research topic
Closes: 13:00 on 26 July 2023

- **[23/37 Higher-calorie refeeding compared with lower-calorie refeeding in malnourished adults with anorexia nervosa](#)**
The Health Technology Assessment Programme is accepting Stage 1 applications to their commissioned workstream for this primary research topic
Closes: 13:00 on 26 July 2023
- **[23/38 Nebulised therapy in patients with Chronic Obstructive Pulmonary Disease and disabling breathlessness](#)**
The Health Technology Assessment Programme is accepting Stage 1 applications to their commissioned workstream for this primary research topic
Closes: 13:00 on 26 July 2023
- **[23/30 Repetitive Transcranial Magnetic Stimulation for Depression in Adolescents](#)**
The Health Technology Assessment Programme is accepting Stage 1 applications to their commissioned workstream for this primary research topic.
Closes: 13:00 on 26 July 2023
- **[23/32 Optimal management of perianal Crohn's disease](#)**
The Health Technology Assessment Programme is accepting Stage 1 applications to their commissioned workstream for this primary research topic
Closes: 13:00 on 26 July 2023
- **[22/171 Acceleration Award – adaptation and assessment of digital technologies for social care](#)**
The Health Technology Assessment Programme is accepting straight-to-stage 2 applications to their commissioned workstream, for this primary research topic.
Closes: 13:00 on 26 July 2023

Information on all NIHR funding can be found on the [NIHR Funding website](#).



UKRI grant calls

UKRI is developing funding along strategic themes with a variety of co-funders including

the MRC. Look out for information on its website relating to its themes:

- Building a green future
- Securing better health, ageing and wellbeing
- Tackling infections
- Building a Secure and resilient world
- Creating opportunities, improving outcomes

Currently open UKRI funding includes:

- [**Infections and immunity research**](#)
Apply for funding to support research projects focused on infections and immunity. You must be a researcher employed at a research organisation eligible to apply for MRC funding; have at least a postgraduate degree. You can involve more than 1 research group or institution in the project.
Closing date: 10 May 2023
- [**Manufacturing research hubs for a sustainable future two: outline stage**](#)
Apply for funding to establish a large-scale, multidisciplinary research hub in support of manufacturing, environmental sustainability and net zero. You must be based at a UK research organisation eligible for EPSRC funding. Projects should address major, long-term challenges facing manufacturing industries.
Closing date: 10 May 2023
- [**Global Centres in clean energy and climate change**](#)
Apply for funding to support new cutting-edge, interdisciplinary, use-inspired research on clean energy and climate change through international partnerships fostering novel breakthroughs or informing policy. You must be based at a UK research organisation eligible for UKRI funding.
Closing date: 11 May 2023
- [**Population and systems medicine new investigator**](#)
Apply for funding to research population and systems medicine; take the next step towards becoming an independent principal investigator; You must have a postgraduate degree and the support of a host research organisation eligible for MRC funding
Closing date: 17 May 2023
- [**Population and systems medicine programme**](#)
Apply for funding to support a programme of research focused on population and systems medicine. You must be a

researcher employed at an eligible research organisation eligible to apply for MRC funding; have at least a postgraduate degree; have a record of securing funding and delivering research
Closing date: 17 May 2023

- [**Population and systems medicine partnership**](#)
Apply for funding to support new partnerships between diverse groups of researchers in population and systems medicine. You must be a researcher employed by a research organisation eligible to apply for MRC funding; have at least a postgraduate degree
Closing date: 17 May 2023
- [**Population and systems medicine research**](#)
Apply for funding to support research projects focused on population and systems medicine. You must be a researcher employed at a research organisation eligible to apply for MRC funding; have at least a postgraduate degree; You can involve more than 1 research group or institution in the project.
Closing date: 17 May 2023
- [**Centre in climate change and Health**](#)
Apply for funding to establish a centre in climate change and health. This centre will be a world-leading centre of excellence that carries out interdisciplinary, cutting-edge and impactful research to address major challenges at the interface of climate and health research. You must be based at a UK research organisation eligible for UK Research and Innovation (UKRI) funding.
Closing date: 17 May 2023
- [**Centre in community participation and Connectedness**](#)
Apply for funding to establish a centre for community participation and connectedness. This centre will be a world-leading centre of excellence that carries out interdisciplinary, cutting-edge and impactful research. You must be based at a UK research organisation eligible for UK Research and Innovation (UKRI) funding.
Closing date: 17 May 2023
- [**International centre-to-centre research collaborations**](#)
Apply for funding to form a world-leading partnership and work with the best international collaborators for your research. You must be based at a UK research organisation eligible for EPSRC funding and meet one of our qualifying

criteria to apply for this funding opportunity.

Closing date: 18 May 2023

- [Neurosciences and mental health new investigator](#)
Apply for funding to research neurosciences and mental health; take the next step towards becoming an independent principal investigator; You must have a postgraduate degree; the support of a host research organisation eligible for MRC funding.
Closing date: 24 May 2023
- [Neurosciences and mental health programme](#)
Apply for funding to support a programme of research focused on population and systems medicine. You must be a researcher employed at an eligible research organisation eligible to apply for MRC funding; have at least a postgraduate degree; have a record of securing funding and delivering research
Closing date: 24 May 2023
- [Build on existing COVID-19 infrastructure, partnerships and resources](#)
Apply for funding to build on existing COVID-19 collaborative infrastructure, partnerships and resources. You must be based at a UK research organisation and eligible for MRC funding. Proposals must be within the remit of MRC's four research boards.
Closing date: 24 May 2023
- [Centre of Excellence for Resilient Infrastructure Analysis on DAFNI](#)
Apply for funding to support the Centre of Excellence for Resilient Infrastructure Analysis on the Data and Analytics Facility for National Infrastructure (DAFNI). We are seeking participation from UK research organisations who will work to address grand-challenge problems for infrastructure resilience. We are interested in modelling and analysis methodologies to be used to explore resilience and support decision-making to address short or long-term shocks.
Closing date: 31 May 2023
- [China UK One Health research for epidemic preparedness and AMR](#)
Apply for funding through a China UK Flagship Challenge funding opportunity to support China-UK research teams in the field of One Health research for epidemic preparedness and antimicrobial resistance (AMR). We are looking for internationally competitive, full-scale collaborative and innovative partnerships. Collaborative

research teams from China and the UK must submit parallel applications to UKRI and MoST.

Closing date: 7 June 2023

- [Accelerating the medicines revolution outline: large grants](#)
Apply for funding to revolutionise the development and manufacture of future medicines. We encourage interdisciplinary and cross-disciplinary projects and you must consider manufacturability from the outset. You must be based at a UK research organisation eligible for EPSRC funding.
Closing date: 7 June 2023
- [Global non-communicable disease prevention in cities](#)
Apply for global health funding to prevent non-communicable diseases in cities through implementation research. You must: be based at a UK research organisation eligible for UK Research and Innovation funding; work in partnership with co-investigators based in low or middle-income countries where the work will take place. Your research must: have clear implications for reducing the onset or progression of non-communicable diseases in cities; have clear implications for reducing health inequalities. Up to £5,000,000 is available (subject to quality). We expect to fund several projects.
Closing date: 7 June 2023
- [Artificial intelligence hubs for real data and scientific and engineering research](#)
Following an outline stage, successful applicants are invited to submit full proposals for an artificial intelligence (AI) research hub in either AI for Real Data or AI for Science. This investment will advance the use of AI when working with challenging and complex data and accelerate the use of AI in science.
Closing date: 8 June 2023
- [Mental health platform hubs](#)
Apply for funding for an interdisciplinary mental health hub (consortium) that addresses key mental health challenges. The hubs will be funded for up to five years at 80% of the full economic cost. Awards will have a fixed start date of 1 April 2024. You must be based at a UK research organisation and eligible for UK Research and Innovation funding.
Closing date: 13 June 2023
- [Develop guidance for better research methods: June 2023](#)
Apply for funding to develop new guidance on biomedical and health research methods. The guidance should aim to:

improve the understanding and use of better methods related to the remit of MRC or NIHR; be accessible to those without specialist methodology knowledge. You must be a researcher employed by an eligible research organisation.

Closing date: 14 June 2023

- [**Better methods, better research: June 2023**](#)

Apply for funding to improve the methods used by others in biomedical and health research. You must focus your project on methods research within MRC or NIHR remit; be a researcher employed by an eligible research organisation (this includes MRC units and centres)

Closing date: 14 June 2023

- [**Better methods, better research new investigator: June 2023**](#)

Apply for funding to improve the methods used by others in biomedical and health research and develop your career. You must focus your project on methods research within MRC or NIHR remit; be a researcher who will be employed by an eligible research organisation (this includes MRC units and centres).

Closing date: 14 June 2023

- [**Research and partnership hubs for health technologies**](#)

Apply for funding to establish a large-scale, multidisciplinary research hub in an area of strategic importance to the delivery of EPSRC's health technologies strategy. Proposals should plan for long-term research and partnership work. The main focus needs to be novel engineering and physical sciences. Standard EPSRC eligibility applies.

Closing date: 18 July 2023

- [**Developmental Pathway Funding Scheme**](#)

Apply for funding to develop and test novel therapeutics, medical devices, diagnostics and other interventions. You must be based at a research organisation eligible for MRC funding; meet individual eligibility requirements

Closing date: 19 July 2023

- [**Human Functional Genomics Initiative clusters**](#)

Apply for funding to lead a cluster as part of a coordinated Human Functional Genomics Initiative.

You must: be based at an organisation eligible for MRC funding; meet individual eligibility requirements. The total fund is up to £16 million and funding will last for four years. We anticipate funding four to five clusters.

Closing date: 27 July 2023

- [**Building a Secure and Resilient World: Research and Coordination Hub**](#)

Apply for funding for UKRI's Building a Secure and Resilient World Research and Coordination Hub. This investment will convene interdisciplinary research and innovation across the UKRI remit to strengthen societal and economic resilience and enhance security across virtual and physical environments.

Closing date: 27 July 2023

- [**Applied global health research**](#)

Apply for funding to support research that will address global health challenges and inequities. They will accept proposals of all sizes, including large research projects and small to medium-scale applications.

Closing date: 1 August 2023

- [**Applied global health partnership**](#)

Apply for funding to support partnerships to enable research that will address global health challenges and inequities. They will accept proposals of all sizes, including large projects and small to medium-scale applications.

Closing date: 1 August 2023

Pre-Announcement 'heads-ups':

- [**Pre-announcement: Creating Opportunities Evaluation Development Fund**](#)

Apply for up to 12 months of funding to undertake evaluation activities that improve our understanding of interventions that increase opportunities and reduce disparities in economic, health and social outcomes for people and places across the UK. You must be based at a UK research organisation and eligible for UK Research and Innovation funding.

- [**Pre-announcement: Creating Opportunities Trial Accelerator Fund**](#)

Apply for funding to test and rigorously evaluate the effectiveness of interventions aimed at spreading opportunities and reducing disparities in economic, health and social outcomes for people and places across the UK. You must be based at a UK research organisation and eligible for UK Research and Innovation funding.

- [**Land use for net zero – Hub \(LUNZ-Hub\)**](#)

Apply for funding to establish a coordination and translation hub for the transforming land use for net zero, nature and people programme. The full economic cost (FEC) of your project can be up to £7,800,000. UK Research and Innovation

(UKRI) will fund 80% of the FEC (up to £6,250,000). Funding is available for up to 40 months, with a fixed start date of 1 November 2023. You must be based at a UK research organisation to be eligible for UKRI funding.

- **[Pre-announcement: Creating Opportunities Evaluation Development Fund](#)**
Apply for up to 12 months of funding to undertake evaluation activities that improve our understanding of interventions that increase opportunities and reduce disparities in economic, health and social outcomes for people and places across the UK. You must be based at a UK research organisation and eligible for UK Research and Innovation funding.
- **[NERC Centre for doctoral training: open funding opportunity](#)**
Apply for funding to deliver a NERC centre for doctoral training (CDT) to address priority or emerging training needs within the environmental sciences. Applications must be centred within NERC's remit but interdisciplinary and multidisciplinary CDTs extending more widely across the breadth of UK Research and Innovation (UKRI) are welcome. NERC funding is available to support three CDTs each in receipt of 24 notional studentships across three annual intakes. Organisations that are not eligible for funding may act as collaborative partners.

For more information please [visit the UKRI website](#).

International Research and Innovation Funding Opportunities

A bi-monthly bulletin of various international funding opportunities is available on the JRMO International Team's [Sharepoint site](#). It contains a huge number of research funding schemes from the EU and other international sources.

If you don't already have access to that Sharepoint site please contact a [member of the international team](#) to obtain it

British Academy – additional needs funding pot

The British Academy is introducing a new initiative to support researchers with additional needs. We are inviting current and new award holders who would like to apply for additional funding to support their awards or applications. Funding has been set aside to support any additional needs that applicants and award holders may require. This funding would be in addition to the amount already requested for research expenses. The British Academy is keen to be as inclusive as possible in supporting applicants and award holders with any special needs to facilitate the best possible research.

This funding pot is available for both current award holders and applicants who would like to apply for an award, but need support with submitting their application. In all cases, the Academy will need a case to be set out requesting this support, including a brief explanation as to why these needs cannot be met by the applicant's employing or host university or research organisation.

Applications must be submitted online using the British Academy's Grant Management System (GMS), Flexi-Grant®. [For more information visit the British Academy website](#).

This is a rolling funding call with no deadline, but you are recommended to apply as soon as you are able.

Funding call – BA/Leverhulme Small Research Grants

The British Academy is accepting applications for the BA/Leverhulme Small Research Grants scheme. The deadline for applications is 5 pm (BST) on **Wednesday 31 May 2023**.

BA/Leverhulme Small Research Grants are available to support primary research in the humanities and social sciences. These awards, up to £10,000 in value and tenable for up to 24 months, are provided to cover the cost of the expenses arising from a defined research project. Awards are open to postdoctoral scholars (or equivalent) who are ordinarily resident in the United Kingdom.

Please read the [scheme guidance notes](#) and [FAQs](#) carefully. For more information please [visit the British Academy website](#).



Barts Charity Funding

Research Seed Grants

Barts Charity Research Seed Grants provide seed funding up to £75,000 to support the generation of research data and information that enhances our understanding of health and illness and could lead to improved lives in East London, and will support a grant application to another funding organisation or pump-prime a new academic-clinical collaboration.

The charity particularly encourages applications from researchers at the start of their independent careers or those who want to develop ideas that are outside their discipline or area of expertise.

You can find out more about the Research Seed Grants on the [Barts Charity website](#).

Barts Charity welcomes applications for this scheme four times a year.

The next deadline for applications is 22 June 2023

Research Project Grants

Barts Charity Research Project Grants provide funding up to £600,000 to support innovative research that enhances our understanding of health and illness and could lead to improved lives in East London; and will generate research outputs of local and international significance that could form the basis of substantial ongoing support from other funders

You can find out more about the Research Project Grants scheme on the [Barts Charity website](#).

Barts Charity welcomes applications for this scheme twice a year.

The next deadline for applications is 13 June 2023

Fellowships and related opportunities



NIHR fellowship highlights

- [RfPB Under-represented disciplines and specialisms highlight notice: Nurses and Midwives](#)
The Research for Patient Benefit (RfPB) programme invites applications from nurses and midwives to the first highlight notice of a series addressing NIHR strategy to strengthen careers of under-represented disciplines and specialisms.
Closes: 17 May 2023
- [Advanced Local Authority Fellowship \(ALAF\) Scheme](#)
The Advanced Local Authority Fellowship (ALAF) Scheme is the latest addition to the new NIHR Local Authority Academic Fellowship (LAAF) Programme
Closes: 24 May 2023
- [Advanced Clinical and Practitioner Academic Fellowship \(ACAF\) Round 3](#)

The HEE/NIHR ICA Advanced Clinical and Practitioner Academic Fellowship (ACAF) supports post-doctoral researchers to develop their academic career while developing their health or care career. It is part of the ICA programme.

Closes: 1 June 2023

- [Doctoral Clinical and Practitioner Academic Fellowship Round 3](#)
The Doctoral Clinical and Practitioner Academic Fellowship (DCAF) scheme funds registered health and care professionals to undertake a PhD by research and, concurrently, to undertake further professional development and practice.
Closes: 7 June 2023
- [Future-Focused Leadership Programme: Emerging Research Leaders - Cohort 2](#)
Leadership development programme for post-doc NIHR Academy Members
Closes: 16 June 2023
- [NIHR Advanced Fellowship Round 10](#)

NIHR Advanced Fellowship Scheme Round 10 will open for applications from 4 April 2023. It is a postdoctoral Fellowship aimed at anyone with a PhD who hasn't yet been appointed to a professorial post. Closes: 6 July 2023

- [23/55 Advanced Fellowship: Building clinical trials experience](#)

The Efficacy and Mechanism Evaluation (EME) Programme is accepting Stage 2 applications to their commissioned workstream.

Closes: 6 July 2023

- [NIHR Population Health Career Scientist Awards](#)

We are accepting applications for the Population Career Scientist Award.

Closes: 6 July 2023

- [NIHR Doctoral Fellowship Round 10](#)

The NIHR Doctoral Fellowship is a three-year full-time award that supports individuals to undertake a PhD in an area of NIHR research.

Closes: 20 July 2023

Information on all NIHR funding can be found on the [NIHR Funding website](#).



- [AZ-MRC industry partnerships for academic clinicians](#)

Apply for funding to embed within AstraZeneca, to gain knowledge and experience of the regulatory and clinical trial process involved in the development and registration of a new therapy. You must be: based at a UK research organisation; a registered healthcare professional; in receipt of MRC funding. Closing date: 9 May 2023

- [Future Leaders Fellowships: round eight](#)

Apply for funding to support ambitious research and innovation across UKRI's remit.

- [Turing AI World-Leading Researcher Fellowships: round three](#)

Apply for funding to undertake world-leading research to advance the field of artificial intelligence (AI) in the UK. To hold this fellowship, you must be based at a UK organisation and eligible for UKRI funding.

Researchers at Risk Fellowships

The British Academy with [Cara \(the Council for At-Risk Academics\)](#) is establishing *Researchers at Risk Fellowships Programme* with the support of the Academy of Medical Sciences, the Royal Academy of Engineering and the Royal Society. The Fellowships will cover the natural sciences, medical sciences, engineering, humanities, and social sciences with applications made via UK-based institutions. This Programme is a response to the Russian invasion of Ukraine, which has exposed Ukrainian-based researchers to direct threats. We wish to open the scheme more widely when possible. There is an immediate need to provide support for these researchers to enable them to have the space to continue their work. The Programme is receiving £3 million of government funding from the Department for Business, Energy and Industrial Strategy. The Nuffield Foundation, an independent charitable trust, is contributing £0.5 million towards the scheme.

For more information, please visit [the British Academy website](#).



UK Research
and Innovation

Funding is for up to five years. EPSRC will fund 80% of the full economic cost.

Closing date: 7 September 2023

- [Pre-announcement: EPSRC responsive mode open plus fellowship](#)

In May 2023 you must apply to EPSRC responsive mode open plus fellowships via the Funding Service. These are personal, career development-focused awards. Open plus fellowships have an additional focus on enhancing the research environment and culture.

Closing date: 28 September 2023

- [Pre-announcement: EPSRC responsive mode postdoctoral fellowship](#)

In May 2023 you must apply to EPSRC responsive mode: postdoctoral fellowships via the Funding Service. You must have either: a PhD, or at least four years' experience in a relevant field by the start of your fellowship. Candidates with more research experience may prefer to apply for the open fellowship or open plus fellowship. Your fellowship can be up to three years long and may be held part-time. This early career opportunity is only

open in selected research areas. You must be hosted and supported by an eligible UK research organisation during your fellowship.

Closing date: 28 September 2023

- **[Pre-announcement: transition support for MRC intermediate fellows](#)**
Apply for funding for up to two years. This includes half of your salary. The scheme is for current fellows whose research has been affected by several issues. You can apply if you: currently hold an MRC career development award or clinician scientist fellowship; are in the final 18 months of your fellowship.
Closing date: 19 October 2023.
- **[Daphne Jackson fellowship](#)**
These fellowships are for those looking to return to a research career after a break. Fellowships combine a personalised retraining programme with a challenging research project. They are flexible, usually lasting two years at 0.5 full-time equivalent, although some UKRI funders may award longer.

Closing date: Open - no closing date

- **[Researching motor neurone disease: highlight notice](#)**
Apply for funding to research motor neurone disease (MND). You can get funding through any: grants from MRC research boards or panels; or MRC fellowships. You should apply through the existing funding opportunity that is most relevant to your science area and career stage.
Closing date: Open - no closing date
- **[Renewal scheme for current Future Leaders Fellows](#)**
Successful applicants to the Future Leaders Fellowships (FLF) scheme have the opportunity to extend their four-year fellowship by up to a further three years. This funding opportunity is available to current FLF award holders only and should be a continuation of the original FLF fellowship.
Closing date: Open - no closing date

Research Professional

Research Professional (formerly Research Research) has an easy-to-use sign-up process: <http://www.researchprofessional.com/>

Funding information: [Up-to-the minute-information about all types of research funding can be found on the Research Professional website – to access this click here \(account and password required\).](#)